



## Riverside County Early Care and Education Facility Pipeline Map

The Riverside County Early Care and Education Facility Pipeline Map is maintained by First 5 Riverside County as a partner of the **Build Up Riverside County** initiative, a coordinated effort with the Low Income Investment Fund (LIIF), Riverside County Office of Education, and other local partners to create and improve early care and education (ECE) facilities countywide. **Build Up Riverside County** prepares ECE operators to complete infrastructure projects, leverages the expertise of community development partners, and builds local government capacity to support ECE facilities by streamlining funding and developing supportive policies. For more information on **Build Up Riverside County**, visit the initiative’s website here: <https://buildupca.org/riverside/>.

The Facility Pipeline Map seeks to inform County and City policy and funding decisions, geographically display need for ECE infrastructure investments, and facilitate partnerships with developers and other entities seeking to partner or co-locate with child care programs. The map is available through the **Build Up Riverside County** website or the Riverside County Open Data Portal here: <https://rccfc.org/riverside-county-early-care-and-education-pipeline/>.

This document provides an overview of the Facility Pipeline Map’s core functions and data sources. For questions about the map or the **Build Up Riverside County** initiative, please contact:

### First 5 Riverside County

For Quality Early Learning: Carol Abella, Regional Manager, at [cabella@rivco.org](mailto:cabella@rivco.org)

For mapping GIS: Rina K. Hutajulu, Research Specialist II, at [rhutajulu@rivco.org](mailto:rhutajulu@rivco.org)

For public information: Sean Pravica, Senior Public Information Specialist,

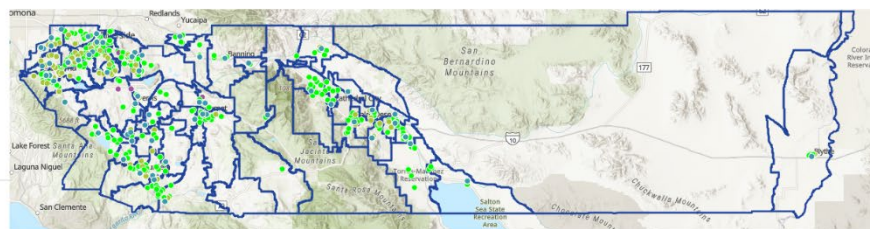
at [spravica@rivco.org](mailto:spravica@rivco.org)

### Low Income Investment Fund

Andrea Del Valle, Riverside County ECE Pipeline Coordinator, at [adelvalle@liifund.org](mailto:adelvalle@liifund.org).

**Understanding the Base Map:** The fundamental function of the Facility Pipeline Map is to geographically display existing supply of licensed ECE facilities in the county. Upon first navigation to the mapping portal, users will see licensed ECE facilities overlaid on all zip codes in Riverside County. Facilities are color-coded based on the type of license they have, as shown in the sample legend below. By clicking on individual points, users can view the licensed capacity,

- Base Map
- LICENSED FACILITIES OCT. 2022
- FAMILY CHILD CARE HOME
  - CHILD CARE CENTER
  - SCHOOL AGE CHILD CARE CENTER
  - INFANT CENTER
  - CHILD CARE CENTER - ILL. CENTER
- ZIP CODE INFORMATION
- 

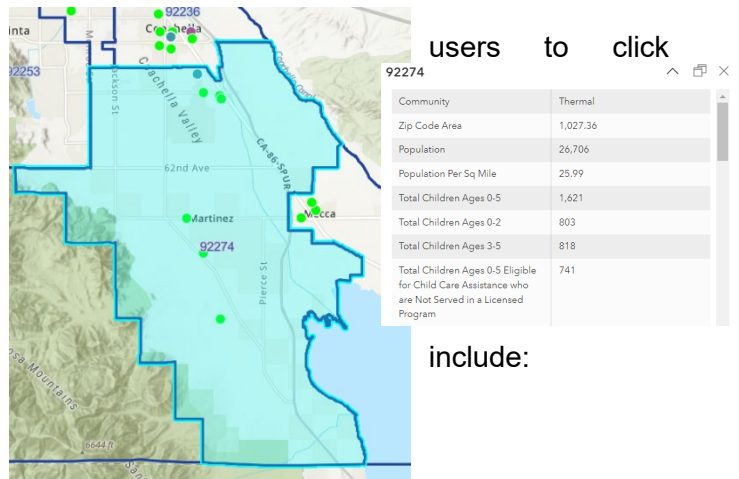




contact information, and other important details about specific sites. Of note, small Family Child Care Homes (FCCH) that are licensed to serve 8 children or less are not shown on the base map because address-level data is not publicly available for these facilities. Small FCCH capacity and sites are reflected in the zip code analysis detailed below.

**Zip Code Analysis:** Most analysis available in the mapping tool comes through the 'Zip Code Analysis' function, which can be toggled on and off using the layer options box on the left side of the map view. To turn this function on, simply click the icon that corresponds with the Zip Code Analysis category.

The base Zip Code Analysis layer allows individual zip codes and view demographic and ECE data for the geographic area. Screenshots provide an example of analysis available for the 92274 zip code.



users to click

include:

A full source library is available in Appendix A at the end of this document. Metrics available in pop-out windows by zip code

- Community Name
- Zip Code Area
- Total population
- Population per square mile
- Total children ages 0-5, 0-2, and 3-5
- Total children ages 0-5, 0-2, and 3-5 who are eligible for Child Care Assistance but are not served in a licensed facility
- Count of small Family Child Care Homes (FCCH) that do not have publicly available address data
- Capacity of small FCCHs
- Count of all other licensed ECE Facilities (Centers and Large FCCHs)
- Capacity of all licensed ECE Facilities, disaggregated by age groups served and setting (Centers, Large FCCHs, Small FCCHs)
- Total number of licensed ECE Facilities, disaggregated by age groups served and setting (Centers, Large FCCHs, Small FCCHs)
- Total licensed ECE Facilities per 1000 children ages 0-5
- Results of LIIF 2022 analysis of total new ECE facilities by setting needed to meet base demand for all children and specific age bands
- Results of LIIF 2022 analysis of construction cost estimates for facilities projects required to meet base demand by age and setting

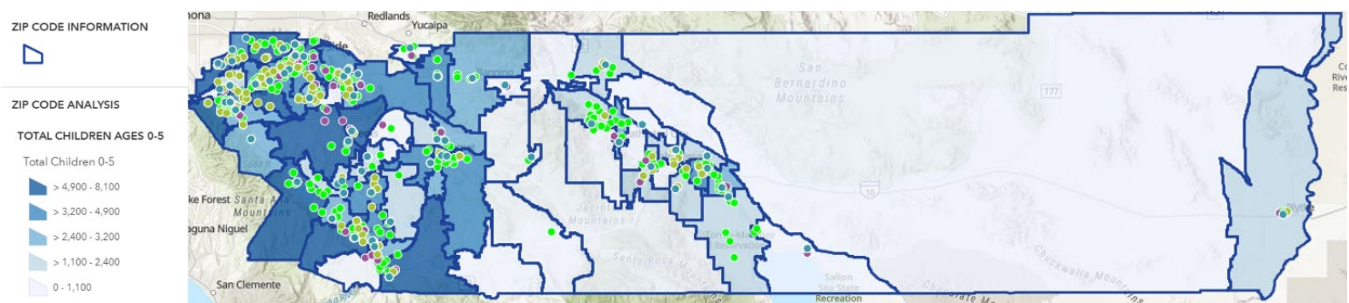
In addition to data available for individual zip codes, users can also compare data for the whole county across zip codes. To navigate to this analysis, click to dropdown carrot in the Zip Code Analysis category of the layer legend and toggle different views on and off. This will prompt a



color-coding function on the map, where darker blue zip codes correspond to larger numbers or more significant proportions when compared to all other zip codes in the county. Available comparison metrics include:

- Total population
- Total child population ages 0-5, 0-2, and 3-5
- Total children ages 0-5, 0-2, and 3-5 who are eligible for Child Care Assistance but are not served in a licensed facility
- Total new ECE facilities needed
- Total construction cost estimates for facilities projects required to meet base demand

The map below shows sample analysis comparing total populations of young children by zip code.



**Other Indicators for Analysis:** In addition to core elements above, users can interact with ECE and affordable housing pipeline data, various county and city boundaries, and environmental indicators to further assess the County's ECE supply and pipeline.

1. In the **ECE Pipeline** section, users can view sites and programs that may be able to accommodate or have interest in future ECE expansion or renovation projects. Data on these programs are the product of an ongoing pipeline information distributed and managed by **Build Up Riverside County**, available [here](#). Information in this section will be updated regularly as new projects and sites are added to the County's pipeline. Clicking on the locations of individual pipeline sites allows users to learn more about the projects, as shown in the screenshot below for an empty site in the Roy Wilson Community Center in Blythe, California.

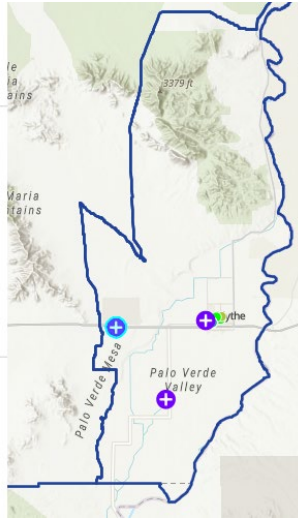
ADDITIONAL ECE SLOTS



LICENSED FACILITIES OCT. 2022

- PRE SCHOOL
- FAMILY CHILD CARE HOME
- SCHOOL AGE CHILD CARE CENTER
- INFANT CENTER
- PRE SCHOOL - ILL CENTER

ZIP CODE INFORMATION



Additional ECE Slots: Roy Wilson Community

Project Name	Roy Wilson Community
Status of Slots	Potential
Status for ECE Site	Empty ECE Building Site
Gap	Operator and additional funding
Street Address	13341 Mesa Dr
City	Blythe
Zip Code	92225
Housing Workforce Solution Pipeline	N/A
ECE Funding	No
County/City Property Land	County
Co-location	Co-located with Community Center
Type of Project	Empty ECE center that needs operator
Infrastructure additional ECE slots	0
ECE facility construction (Indoor facility, Outdoor playground, or Both)	Both
X Coordinate	-114.72757

2. The **Housing Data** section of the menu includes options to view the **Lift to Rise Affordable Housing Development Pipeline** in the Coachella Valley and the location of Qualified Census Tracts (QCTs) countywide. The screenshot below shows locations potentially well-suited for co-location of affordable housing and ECE facilities. For example, large swaths of the City of Indio are QCTs, making developers proposing Low Income Housing Tax Credit (LIHTC) projects in those places eligible for additional awards that can help construct ECE facilities within housing projects under a Community Service Facility (CSF) designation.

- FAMILY CHILD CARE HOME
- CHILD CARE CENTER
- SCHOOL AGE CHILD CARE CENTER
- INFANT CENTER
- CHILD CARE CENTER - ILL CENTER

ZIP CODE INFORMATION

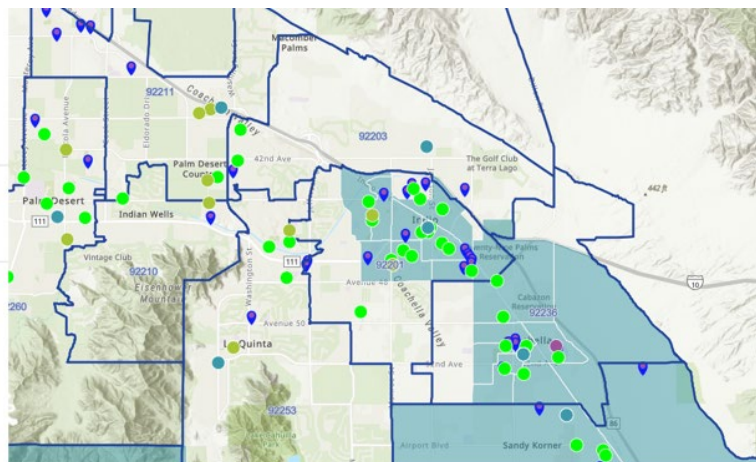


HOUSING DATA

LTR HOUSING PIPELINE SITES

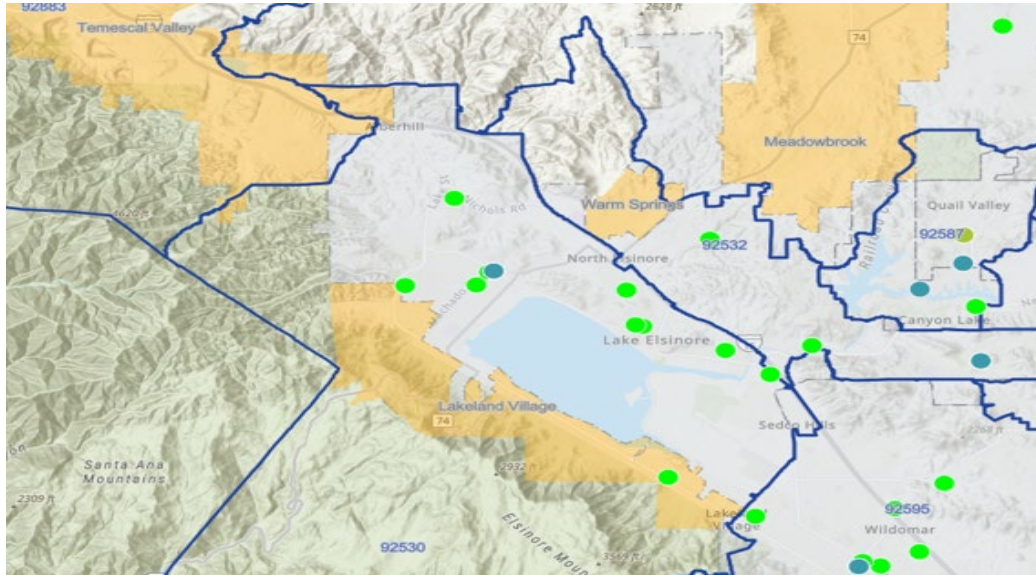


QUALIFIED CENSUS TRACTS



3. Users can toggle jurisdictions and boundaries other than zip codes onto the map with functions in the **Riverside County Reference Layers** section. In the screenshot below, boundaries for cities like Lake Elsinore and Wildomar are overlaid on the base map in addition to unincorporated communities such as Lakeland Village. County supervisorial

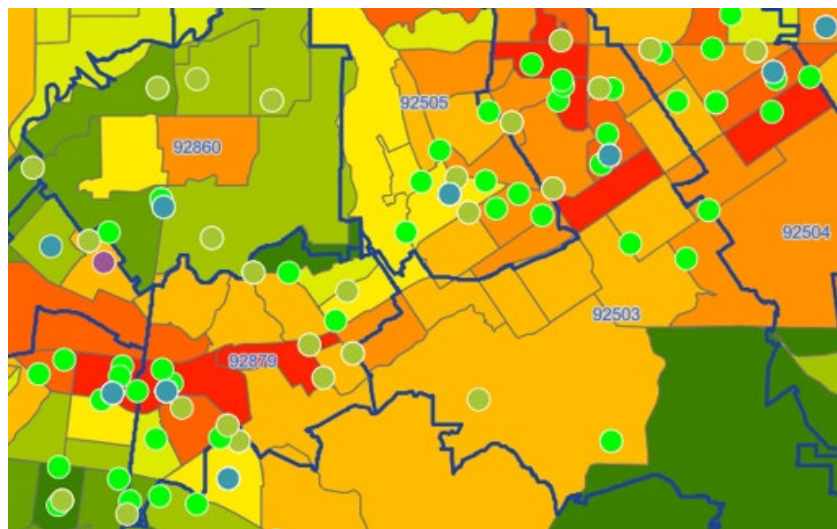
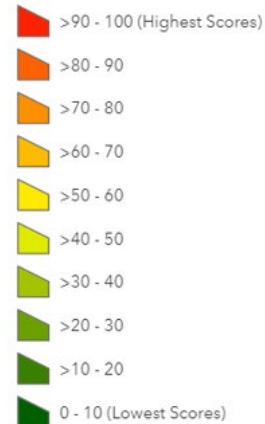
districts for 2011 and 2021, school districts, and Eastern Coachella Valley air quality monitoring and emissions reduction boundaries are also available.



4. Social and environmental data are available through the **CalEnviroScreen 4.0 Results** section. The CalEnviroScreen is a tool updated regularly by the California Office of Environmental Health Hazard Assessment (OEHHA) to identify communities across the state that are most affected by and vulnerable to pollution and environmental hazards. This function of the map allows users to view total CalEnviroScreen scores for all census tracts in Riverside County, as displayed in the screenshot below for western areas of the County. Clicking individual census tracts also allows for viewing underlying data that informs a tract’s score, with information on ozone levels, particulate matter concentration, and all other variables reported in the data dictionary in Appendix A.

**CALENVIROSCREEN 4.0 RESULTS**

ClScoreP



## Appendix A. Data Dictionary and Source Library

The table below includes brief definitions and sources for all data included the Riverside County ECE Facilities Pipeline Map. Information in the table is organized by sections in the analysis toolbar of the mapping tool.

Metric	Source	Definition
<i>Section 1. Licensed Facilities</i>		
Preschool	California Department of Social Services [CDSS], Community Care Licensing Division. Available <a href="#">here</a> .	A Child Care Center facility that serves children ages 2-5. Full glossary of child care licensing terms available here: <a href="https://www.cclcd.dss.ca.gov/carefacilitysearch/Glossary">https://www.cclcd.dss.ca.gov/carefacilitysearch/Glossary</a> .
Family Child Care Home	California Department of Social Services [CDSS], Community Care Licensing Division. Available <a href="#">here</a> .	A licensed facility that provides child care in the licensee's own home to no more than 14 children. Full glossary of child care licensing terms available here: <a href="https://www.cclcd.dss.ca.gov/carefacilitysearch/Glossary">https://www.cclcd.dss.ca.gov/carefacilitysearch/Glossary</a> .
School Age Child Care Center	California Department of Social Services [CDSS], Community Care Licensing Division. Available <a href="#">here</a> .	A Child Care Center facility that serves children ages 5-17. Full glossary of child care licensing terms available here: <a href="https://www.cclcd.dss.ca.gov/carefacilitysearch/Glossary">https://www.cclcd.dss.ca.gov/carefacilitysearch/Glossary</a> .
Infant Center	California Department of Social Services [CDSS], Community Care Licensing Division. Available <a href="#">here</a> .	A Child Care Center facility that serves children ages 0-2. Full glossary of child care licensing terms available here: <a href="https://www.cclcd.dss.ca.gov/carefacilitysearch/Glossary">https://www.cclcd.dss.ca.gov/carefacilitysearch/Glossary</a> .
Preschool – ILL Center	California Department of Social Services [CDSS], Community Care Licensing Division. Available <a href="#">here</a> .	A Child Care Center facility for children that have short-term mild illnesses. Full glossary of child care licensing terms available here: <a href="https://www.cclcd.dss.ca.gov/carefacilitysearch/Glossary">https://www.cclcd.dss.ca.gov/carefacilitysearch/Glossary</a> .
<i>Section 2. Other ECE Facilities</i>		
Closed	California Department of Social Services [CDSS], Community Care Licensing Division. Available <a href="#">here</a> .	A Child Care Center facility or Family Child Care Home that has permanently closed.
Inactive	California Department of Social Services [CDSS], Community Care Licensing Division. Available <a href="#">here</a> .	A Child Care Center facility or Family Child Care Home that has temporarily closed.

<b>Metric</b>	<b>Source</b>	<b>Definition</b>
Pending	California Department of Social Services [CDSS], Community Care Licensing Division. Available <a href="#">here</a> .	A Child Care Center facility or Family Child Care Home that has a pending license.
On Probation	California Department of Social Services [CDSS], Community Care Licensing Division. Available <a href="#">here</a> .	A Child Care Center facility or Family Child Care Home that is on probation due to a licensing violation.
<b>Section 3. ECE Pipeline</b>		
Site/Project Name	LIIF, 2023. Build Up Riverside County ECE pipeline collaboration partnership with Frist 5 Riverside County, Lift to Rise, Riverside County Department of Housing & Workforce Solutions, Housing Authority and other partners. Build Up Riverside County Intake Form. Fillable form available <a href="#">here</a> .	Name of the ECE infrastructure project. This could be the child care program or an informal site name assigned by a developer, public agency, etc.
Street Address	LIIF, 2023. Build Up Riverside County ECE pipeline collaboration partnership with Frist 5 Riverside County, Lift to Rise, Riverside County Department of Housing & Workforce Solutions, Housing Authority and other partners. Build Up Riverside County Intake Form. Fillable form available <a href="#">here</a> .	Street address of the proposed project.
City	LIIF, 2023. Build Up Riverside County ECE pipeline collaboration partnership with Frist 5 Riverside County, Lift to Rise, Riverside County Department of Housing & Workforce Solutions, Housing Authority and other partners. Build Up Riverside County Intake Form. Fillable form available <a href="#">here</a> .	City of the proposed project.
Zip Code	LIIF, 2023. Build Up Riverside County ECE pipeline collaboration partnership with Frist 5 Riverside County, Lift to Rise, Riverside County Department of Housing & Workforce Solutions, Housing Authority and other partners. Build Up Riverside County Intake Form. Fillable form available <a href="#">here</a> .	Zip code of the proposed project.

Metric	Source	Definition
Property Ownership	LIIF, 2023. Build Up Riverside County ECE pipeline collaboration partnership with Frist 5 Riverside County, Lift to Rise, Riverside County Department of Housing & Workforce Solutions, Housing Authority and other partners. Build Up Riverside County Intake Form. Fillable form available <a href="#">here</a> .	Land ownership.
ECE Project /Construction Type	LIIF, 2023. Build Up Riverside County ECE pipeline collaboration partnership with Frist 5 Riverside County, Lift to Rise, Riverside County Department of Housing & Workforce Solutions, Housing Authority and other partners. Build Up Riverside County Intake Form. Fillable form available <a href="#">here</a> .	This shows the type of ECE infrastructure project or construction the ECE program will have. It can be a new ECE construction, a ECE program rehabilitation, a ECE tenant improvement, a ECE program expansion, ECE renovation, ECE co-location new construction, ECE relocation of program, or other.
Space Type for ECE Facility Construction	LIIF, 2023. Build Up Riverside County ECE pipeline collaboration partnership with Frist 5 Riverside County, Lift to Rise, Riverside County Department of Housing & Workforce Solutions, Housing Authority and other partners. Build Up Riverside County Intake Form. Fillable form available <a href="#">here</a> .	The type of ECE facility infrastructure construction will be such as indoor ECE constructure only, outdoor ECE construction only or both.
Development Phase for ECE Site	LIIF, 2023. Build Up Riverside County ECE pipeline collaboration partnership with Frist 5 Riverside County, Lift to Rise, Riverside County Department of Housing & Workforce Solutions, Housing Authority and other partners. Build Up Riverside County Intake Form. Fillable form available <a href="#">here</a> .	The development phase for ECE site tells us where the ECE project development phase is currently. The project development phases are <b>Complete</b> (this is when the ECE project is complete). <b>Under construction or Set under construction in 6 months</b> (this is when the ECE project is under construction and in progress of being completed). <b>Paused construction due to financing or Paused construction due to permits or other</b> (this is when there is some sort of public financing challenge or construction challenge that caused the project to pause). <b>Predevelopment phase</b> (this is when developer has agreed to build an ECE center, they are planning for the project and are



Metric	Source	Definition
		finding funding and an operator for this site). Some sort of public financing commitment challenge (there is a problem with financing the ECE project). <b>Dreamer projects conceptually framed</b> (Considering to build or add an ECE site but need guidance and funding). <b>Empty ECE building site</b> (this means that the ECE center building was built but is closed and is now an empty building. ECE operator needs to be found for this empty site).
Gap	LIIF, 2023. Build Up Riverside County ECE pipeline collaboration partnership with Frist 5 Riverside County, Lift to Rise, Riverside County Department of Housing & Workforce Solutions, Housing Authority and other partners. Build Up Riverside County Intake Form. Fillable form available <a href="#">here</a> .	Shows unmet needs due, having to find an ECE operator for the ECE center, need additional funding for the ECE center, need other type of support, need both an operator for the ECE center and additional funding, or all of the above that caused the infrastructure ECE project to pause.
Status for ECE Site	LIIF, 2023. Build Up Riverside County ECE pipeline collaboration partnership with Frist 5 Riverside County, Lift to Rise, Riverside County Department of Housing & Workforce Solutions, Housing Authority and partners. Build Up Riverside County Intake Form. Fillable form available <a href="#">here</a> .	Shows the status of ECE slots that will be additional slots, potential new ECE slots, new ECE slots, or impacted current slots to each infrastructure project that is completed. Additional slots refers that the program all ready have licensed ECE slots, but are probably expanding/renovating their program to add these new slots. Potential new ECE slots refer to a projects that has committed to adding ECE slots, but its in the predevelopment phase or the infrastructure project lead show interest of adding child care ECE slots. New ECE slots refers to the new child care center infrastructure projects that has already completed and now has added new slots to the pipeline. Impacted slots refer to a already licensed child care center that has already has child care slots, but has renovated the program so the renovating project has impacted the current ECE slots.
Total Infrastructure additional ECE slots	LIIF, 2023. Build Up Riverside County ECE pipeline collaboration partnership with Frist	The additional ECE slots that will be added, impacted, or both per ECE infrastructure project in Riverside

Metric	Source	Definition
	5 Riverside County, Lift to Rise, Riverside County Department of Housing & Workforce Solutions, Housing Authority and other partners. Build Up Riverside County Intake Form. Fillable form available <a href="#">here</a> .	County due to the type of infrastructure project that is completed.
Source(s) for ECE Funding	LIIF, 2023. Build Up Riverside County ECE pipeline collaboration partnership with Frist 5 Riverside County, Lift to Rise, Riverside County Department of Housing & Workforce Solutions, Housing Authority and other partners. Build Up Riverside County Intake Form. Fillable form available <a href="#">here</a> .	Early childhood education (ECE) type of funding source for the infrastructure type of project.
Co-location	LIIF, 2023. Build Up Riverside County ECE pipeline collaboration partnership with Frist 5 Riverside County, Lift to Rise, Riverside County Department of Housing & Workforce Solutions, Housing Authority and other partners. Build Up Riverside County Intake Form. Fillable form available <a href="#">here</a> .	You can see in the ECE child care center is co-located or not. If it is, then ECE child care center is co-located within a facility such as hospital, community center, library, employment center, school, housing development or other.
Projects in the Housing Workforce Solution Pipeline	LIIF, 2023. Build Up Riverside County ECE pipeline collaboration partnership with Frist 5 Riverside County, Lift to Rise, Riverside County Department of Housing & Workforce Solutions, Housing Authority and other partners. Build Up Riverside County Intake Form. Fillable form available <a href="#">here</a> .	Housing development projects that are in Riverside County that are in the Housing Workforce Solution Pipeline.
<b>Section 4. Zip Code Information</b>		
Community	Riverside County Mapping Portal. Communities Layer. Available <a href="#">here</a> .	A polygon layer of all the communities in Riverside County.
Population	Esri Demographic Information. Available <a href="#">here</a> .	Total zip code population.
Population Per Sq Mile	Esri Demographic Information. Available <a href="#">here</a> .	Total zip code population per square mile.
Total Children Ages 0-5	Consortium for Early Learning Services, Local Planning Council [LPC]. County Zip	Total zip code population ages 0-5.

Metric	Source	Definition
	Codes Priority Report, 2022. Available <a href="#">here</a> .	
Total Children Ages 0-2	Consortium for Early Learning Services, Local Planning Council [LPC]. County Zip Codes Priority Report, 2022. Available <a href="#">here</a> .	Total zip code population ages 0-2.
Total Children Ages 3-5	Consortium for Early Learning Services, Local Planning Council [LPC]. County Zip Codes Priority Report, 2022. Available <a href="#">here</a> .	Total zip code population ages 3-5.
Total Children Ages 0-5 Eligible for Child Care Assistance who are Not Served in a Licensed Program	Consortium for Early Learning Services, Local Planning Council [LPC]. County Zip Codes Priority Report, 2022. Available <a href="#">here</a> .	Total number of children ages 0-5 living in the zip code who are eligible for child care assistance from the California Department of Social Services [CDSS] but are not served in a licensed Child Care Center or Family Child Care Home. To be eligible for CDSS child care assistance, families must have incomes below 85% of the State Median Income [SMI].
Total Children Ages 0-2 Eligible for Child Care Assistance who are Not Served in a Licensed Program	Consortium for Early Learning Services, Local Planning Council [LPC]. County Zip Codes Priority Report, 2022. Available <a href="#">here</a> .	Total number of children ages 0-2 living in the zip code who are eligible for child care assistance from CDSS but are not served in a licensed Child Care Center or Family Child Care Home. To be eligible for CDSS child care assistance, families must have incomes below 85% of SMI.
Total Children Ages 3-5 Eligible for Child Care Assistance who are Not Served in a Licensed Program	Consortium for Early Learning Services, Local Planning Council [LPC]. County Zip Codes Priority Report, 2022. Available <a href="#">here</a> .	Total number of children ages 3-5 living in the zip code who are eligible for child care assistance from CDSS but are not served in a licensed Child Care Center or Family Child Care Home. To be eligible for CDSS child care assistance, families must have incomes below 85% of SMI.
Small FCCH IDs	Riverside County Office of Education [RCOE], September 2022. Aggregated at zip code level for privacy.	Identification numbers for Small Family Child Care Homes [FCCH]. Address-level data are not available for FCCHs, so these facilities are only shown at the aggregated zip code level. A Small FCCH is a licensed facility that provides child care in the licensee's own home to no more than eight children.

<b>Metric</b>	<b>Source</b>	<b>Definition</b>
Small FCCH Count	Riverside County Office of Education [RCOE], September 2022. Aggregated at zip code level for privacy.	Total Small FCCH facilities in the zip code.
Small FCCH Capacity	Riverside County Office of Education [RCOE], September 2022. Aggregated at zip code level for privacy.	Total number of children that can be served in all Small FCCH facilities in the zip code.
Large ECE Facilities Count	CDSS Community Care Licensing Division.	Total number of large early care and education (ECE) facilities in the zip code. This includes all active Child Care Centers and Large Family Child Care Homes.
Total ECE Facilities	CDSS Community Care Licensing Division.	Total number of early care and education (ECE) facilities in the zip code. This includes all active Child Care Centers, Large Family Child Care Homes, and Small Family Child Care Homes.
Large ECE Licensed Capacity	CDSS Community Care Licensing Division.	Total number of children that can be served in all Large ECE facilities in the zip code. This includes all active Child Care Centers and Large Family Child Care Homes.
Licensed ECE Facilities Per 1000 Children Ages 0-5	Calculated by Low Income Investment Fund [LIIF] using data from CDSS Community Care Licensing Division and 2022 LPC Zip Code Priorities Report.	Ratio of total licensed ECE facilities per 1000 children ages 0-5 in the zip code.
Total New Facilities Needed	J. Fretwell, A. Garling, E. Monahan, & J. Vincent. Low Income Investment Fund [LIIF]. Riverside County Child Care Facilities Landscape Scan, 2022.	Total projected new licensed Child Care facilities needed based on proportion of eligible but unserved children ages 0-5 in the zip code.
Total New Centers Needed	J. Fretwell, A. Garling, E. Monahan, & J. Vincent. Low Income Investment Fund [LIIF]. Riverside County Child Care Facilities Landscape Scan, 2022.	Total projected new licensed Child Care Centers needed based on proportion of eligible but unserved children ages 0-5 in the zip code.
Total New Centers Needed, Infants and Toddlers	J. Fretwell, A. Garling, E. Monahan, & J. Vincent. Low Income Investment Fund [LIIF]. Riverside County Child Care Facilities Landscape Scan, 2022.	Total projected new licensed Child Care Centers needed based on proportion of eligible but unserved children ages 0-2 in the zip code.

<b>Metric</b>	<b>Source</b>	<b>Definition</b>
Total New Centers Needed, Preschool	J. Fretwell, A. Garling, E. Monahan, & J. Vincent. Low Income Investment Fund [LIIF]. Riverside County Child Care Facilities Landscape Scan, 2022.	Total projected new licensed Child Care Centers needed based on proportion of eligible but unserved children ages 3-5 in the zip code.
Total New Family Child Care Homes Needed	J. Fretwell, A. Garling, E. Monahan, & J. Vincent. Low Income Investment Fund [LIIF]. Riverside County Child Care Facilities Landscape Scan, 2022.	Total projected new licensed Family Child Care Homes needed based on proportion of eligible but unserved children ages 0-5 in the zip code.
Total New Family Child Care Homes Needed, Infants and Toddlers	J. Fretwell, A. Garling, E. Monahan, & J. Vincent. Low Income Investment Fund [LIIF]. Riverside County Child Care Facilities Landscape Scan, 2022.	Total projected new licensed Family Child Care Homes needed based on proportion of eligible but unserved children ages 0-2 in the zip code.
Total New Family Child Care Homes Needed, Preschool	J. Fretwell, A. Garling, E. Monahan, & J. Vincent. Low Income Investment Fund [LIIF]. Riverside County Child Care Facilities Landscape Scan, 2022.	Total projected new licensed Family Child Care Homes needed based on proportion of eligible but unserved children ages 3-5 in the zip code.
Total Construction Cost Estimate for Facilities Needed to Meet Base Child Care Demand (Low Estimate)	J. Fretwell, A. Garling, E. Monahan, & J. Vincent. Low Income Investment Fund [LIIF]. Riverside County Child Care Facilities Landscape Scan, 2022.	Total estimated cost (low estimate) of modernizing existing or constructing new Child Care facilities in the zip code based on estimates of new facilities needed for children ages 0-5.
Total Construction Cost Estimate for Facilities Needed to Meet Base Child Care Demand (High Estimate)	J. Fretwell, A. Garling, E. Monahan, & J. Vincent. Low Income Investment Fund [LIIF]. Riverside County Child Care Facilities Landscape Scan, 2022.	Total estimated cost (high estimate) of modernizing existing or constructing new Child Care facilities in the zip code based on estimates of new facilities needed for children ages 0-5.
Construction Cost Estimate for Facilities Needed to Meet Base Demand for Infant-Toddler Slots (Low Estimate)	J. Fretwell, A. Garling, E. Monahan, & J. Vincent. Low Income Investment Fund [LIIF]. Riverside County Child Care Facilities Landscape Scan, 2022.	Total estimated cost (low estimate) of modernizing existing or constructing new Child Care facilities in the zip code based on estimates of new facilities needed for children ages 0-2.
Construction Cost Estimate for Facilities Needed to Meet Base	J. Fretwell, A. Garling, E. Monahan, & J. Vincent. Low Income Investment Fund [LIIF]. Riverside County Child Care Facilities Landscape Scan, 2022.	Total estimated cost (high estimate) of modernizing existing or constructing new Child Care facilities in the zip code based on estimates of new facilities needed for children ages 0-2.

<b>Metric</b>	<b>Source</b>	<b>Definition</b>
Demand for Infant-Toddler Slots (High Estimate)		
Construction Cost Estimate for Facilities Needed to Meet Base Demand for Preschool Slots (Low Estimate)	J. Fretwell, A. Garling, E. Monahan, & J. Vincent. Low Income Investment Fund [LIIF]. Riverside County Child Care Facilities Landscape Scan, 2022.	Total estimated cost (low estimate) of modernizing existing or constructing new Child Care facilities in the zip code based on estimates of new facilities needed for children ages 3-5.
Construction Cost Estimate for Facilities Needed to Meet Base Demand for Preschool Slots (High Estimate)	J. Fretwell, A. Garling, E. Monahan, & J. Vincent. Low Income Investment Fund [LIIF]. Riverside County Child Care Facilities Landscape Scan, 2022.	Total estimated cost (high estimate) of modernizing existing or constructing new Child Care facilities in the zip code based on estimates of new facilities needed for children ages 3-5.
Communities Served by Small FCCH	Geolocation in ArcGIS Online.	Community area names served by all licensed Small FCCHs in the zip code.
Zip Code	Riverside County Mapping Portal. Zip Codes. Available <a href="#">here</a> .	Selected zip code.
Supervisory District	Riverside County Mapping Portal. Supervisor Districts. Available <a href="#">here</a> .	Current official Riverside County Supervisory Districts.
Total Child Care Centers (Count)	CDSS Community Care Licensing Division.	Total number of licensed Child Care Centers in the zip code.
Total Family Child Care Homes (Count)	CDSS Community Care Licensing Division.	Total number of licensed Family Child Care Homes in the zip code.
Total Infant Centers (Count)	CDSS Community Care Licensing Division.	Total number of licensed Infant Child Care Centers in the zip code.
Total School Age Child Care Centers (Count)	CDSS Community Care Licensing Division.	Total number of licensed School Age Child Care Centers in the zip code.
<b>Section 5. Housing Data</b>		
LTR Housing Pipeline Sites	Lift to Rise [LTR]. Coachella Valley Affordable Housing Pipeline Portal. Available <a href="#">here</a> .	Address-level sites of affordable housing pipeline projects in the Coachella Valley region of Riverside County. Sites include information about lead developers, stage of development, total units to be created, etc.
Qualified Census Tracts	U.S. Department of Housing and Urban Development [HUD] Office of Policy	Qualified Census Tracts for the Low Income Housing Tax Credit (LIHTC) for 2021.

Metric	Source	Definition
	Development and Research. Qualified Census Tracts, 2021. Available <a href="#">here</a> .	
<i>Section 5. CalEnviroScreen 4.0 Results</i>		
tract	California Office of Environmental Health Hazard Assessment (OEHHA). CalEnviroScreen 4.0. Available <a href="#">here</a> .	Census tract number.
ACS2019TotalPop	California Office of Environmental Health Hazard Assessment (OEHHA). CalEnviroScreen 4.0. Available <a href="#">here</a> .	Total population estimate from the 2019 American Community Survey [ACS].
Clscore	California Office of Environmental Health Hazard Assessment (OEHHA). CalEnviroScreen 4.0. Available <a href="#">here</a> .	CalEnviroScreen Score, Pollution Score multiplied by Population Characteristics Score
ClscoreP	California Office of Environmental Health Hazard Assessment (OEHHA). CalEnviroScreen 4.0. Available <a href="#">here</a> .	Percentile of the CalEnviroScreen score
Cldecile	California Office of Environmental Health Hazard Assessment (OEHHA). CalEnviroScreen 4.0. Available <a href="#">here</a> .	Percentile of the CalEnviroScreen score, grouped by 5% increments
ozone	California Office of Environmental Health Hazard Assessment (OEHHA). CalEnviroScreen 4.0. Available <a href="#">here</a> .	Amount of daily maximum 8 hour Ozone concentration.
ozoneP	California Office of Environmental Health Hazard Assessment (OEHHA). CalEnviroScreen 4.0. Available <a href="#">here</a> .	Ozone percentile
pm	California Office of Environmental Health Hazard Assessment (OEHHA). CalEnviroScreen 4.0. Available <a href="#">here</a> .	Annual mean PM 2.5 concentrations
pmP	California Office of Environmental Health Hazard Assessment (OEHHA). CalEnviroScreen 4.0. Available <a href="#">here</a> .	PM2.5 percentile
diesel	California Office of Environmental Health Hazard Assessment (OEHHA). CalEnviroScreen 4.0. Available <a href="#">here</a> .	Diesel PM emissions from on-road and non-road sources

<b>Metric</b>	<b>Source</b>	<b>Definition</b>
dieselP	California Office of Environmental Health Hazard Assessment (OEHHA). CalEnviroScreen 4.0. Available <a href="#">here</a> .	Diesel PM percentile
pest	California Office of Environmental Health Hazard Assessment (OEHHA). CalEnviroScreen 4.0. Available <a href="#">here</a> .	Total pounds of selected active pesticide ingredients (filtered for hazard and volatility) used in production-agriculture per square mile in the census tract
pestP	California Office of Environmental Health Hazard Assessment (OEHHA). CalEnviroScreen 4.0. Available <a href="#">here</a> .	Pesticides percentile
RSEIhaz	California Office of Environmental Health Hazard Assessment (OEHHA). CalEnviroScreen 4.0. Available <a href="#">here</a> .	Toxicity-weighted concentrations of modeled chemical releases to air from facility emissions and off-site incineration (from RSEI)
RSEIhazP	California Office of Environmental Health Hazard Assessment (OEHHA). CalEnviroScreen 4.0. Available <a href="#">here</a> .	Toxic release percentile
traffic	California Office of Environmental Health Hazard Assessment (OEHHA). CalEnviroScreen 4.0. Available <a href="#">here</a> .	Traffic density, in vehicle-kilometers per hour per road length, within 150 meters of the census tract boundary
trafficP	California Office of Environmental Health Hazard Assessment (OEHHA). CalEnviroScreen 4.0. Available <a href="#">here</a> .	Traffic percentile
drink	California Office of Environmental Health Hazard Assessment (OEHHA). CalEnviroScreen 4.0. Available <a href="#">here</a> .	Drinking water contaminant index for selected contaminants
drinkP	California Office of Environmental Health Hazard Assessment (OEHHA). CalEnviroScreen 4.0. Available <a href="#">here</a> .	Drinking water percentile
lead	California Office of Environmental Health Hazard Assessment (OEHHA). CalEnviroScreen 4.0. Available <a href="#">here</a> .	Potential risk for lead exposure in children living in low-income communities with older housing
leadP	California Office of Environmental Health Hazard Assessment (OEHHA). CalEnviroScreen 4.0. Available <a href="#">here</a> .	Children's lead risk from housing percentile



<b>Metric</b>	<b>Source</b>	<b>Definition</b>
cleanups	California Office of Environmental Health Hazard Assessment (OEHHA). CalEnviroScreen 4.0. Available <a href="#">here</a> .	Cleanup sites, sum of weighted EnviroStor cleanup sites within buffered distances to populated blocks of census tracts
cleanupsP	California Office of Environmental Health Hazard Assessment (OEHHA). CalEnviroScreen 4.0. Available <a href="#">here</a> .	Cleanup sites percentile
gwthreats	California Office of Environmental Health Hazard Assessment (OEHHA). CalEnviroScreen 4.0. Available <a href="#">here</a> .	Groundwater threats, sum of weighted GeoTracker leaking underground storage tank sites within buffered distances to populated blocks of census tracts
gwthreatsP	California Office of Environmental Health Hazard Assessment (OEHHA). CalEnviroScreen 4.0. Available <a href="#">here</a> .	Groundwater threats percentile
haz	California Office of Environmental Health Hazard Assessment (OEHHA). CalEnviroScreen 4.0. Available <a href="#">here</a> .	Sum of weighted hazardous waste facilities and large quantity generators within buffered distances to populated blocks of census tracts
hazP	California Office of Environmental Health Hazard Assessment (OEHHA). CalEnviroScreen 4.0. Available <a href="#">here</a> .	Hazardous waste percentile
iwb	California Office of Environmental Health Hazard Assessment (OEHHA). CalEnviroScreen 4.0. Available <a href="#">here</a> .	Impaired water bodies, sum of number of pollutants across all impaired water bodies within buffered distances to populated blocks of census tracts
iwbP	California Office of Environmental Health Hazard Assessment (OEHHA). CalEnviroScreen 4.0. Available <a href="#">here</a> .	Impaired water bodies percentile
swis	California Office of Environmental Health Hazard Assessment (OEHHA). CalEnviroScreen 4.0. Available <a href="#">here</a> .	Sum of weighted solid waste sites and facilities (SWIS) within buffered distances to populated blocks of census tracts
swisP	California Office of Environmental Health Hazard Assessment (OEHHA). CalEnviroScreen 4.0. Available <a href="#">here</a> .	Solid waste percentile
Pollution	California Office of Environmental Health Hazard Assessment (OEHHA). CalEnviroScreen 4.0. Available <a href="#">here</a> .	Average of percentiles from the Pollution Burden indicators (with a half weighting for the Environmental Effects indicators)

<b>Metric</b>	<b>Source</b>	<b>Definition</b>
PollutionScore	California Office of Environmental Health Hazard Assessment (OEHHA). CalEnviroScreen 4.0. Available <a href="#">here</a> .	Pollution Burden variable scaled with a range of 0-10. (Used to calculate CES 4.0 Score)
PollutionP	California Office of Environmental Health Hazard Assessment (OEHHA). CalEnviroScreen 4.0. Available <a href="#">here</a> .	Pollution burden percentile
asthma	California Office of Environmental Health Hazard Assessment (OEHHA). CalEnviroScreen 4.0. Available <a href="#">here</a> .	Age-adjusted rate of emergency department visits for asthma
asthmaP	California Office of Environmental Health Hazard Assessment (OEHHA). CalEnviroScreen 4.0. Available <a href="#">here</a> .	Asthma percentile
lbw	California Office of Environmental Health Hazard Assessment (OEHHA). CalEnviroScreen 4.0. Available <a href="#">here</a> .	Percent low birth weight
lbwP	California Office of Environmental Health Hazard Assessment (OEHHA). CalEnviroScreen 4.0. Available <a href="#">here</a> .	Low birth weight percentile
cvd	California Office of Environmental Health Hazard Assessment (OEHHA). CalEnviroScreen 4.0. Available <a href="#">here</a> .	Age-adjusted rate of emergency department visits for heart attacks per 10,000
cvdP	California Office of Environmental Health Hazard Assessment (OEHHA). CalEnviroScreen 4.0. Available <a href="#">here</a> .	Cardiovascular disease percentile
edu	California Office of Environmental Health Hazard Assessment (OEHHA). CalEnviroScreen 4.0. Available <a href="#">here</a> .	Percent of population over 25 with less than a high school education
eduP	California Office of Environmental Health Hazard Assessment (OEHHA). CalEnviroScreen 4.0. Available <a href="#">here</a> .	Education percentile
ling	California Office of Environmental Health Hazard Assessment (OEHHA). CalEnviroScreen 4.0. Available <a href="#">here</a> .	Percent limited English speaking households

<b>Metric</b>	<b>Source</b>	<b>Definition</b>
lingP	California Office of Environmental Health Hazard Assessment (OEHHA). CalEnviroScreen 4.0. Available <a href="#">here</a> .	Linguistic isolation percentile
pov	California Office of Environmental Health Hazard Assessment (OEHHA). CalEnviroScreen 4.0. Available <a href="#">here</a> .	Percent of population living below two times the federal poverty level
povP	California Office of Environmental Health Hazard Assessment (OEHHA). CalEnviroScreen 4.0. Available <a href="#">here</a> .	Poverty percentile
unemp	California Office of Environmental Health Hazard Assessment (OEHHA). CalEnviroScreen 4.0. Available <a href="#">here</a> .	Percent of the population over the age of 16 that is unemployed and eligible for the labor force
unempP	California Office of Environmental Health Hazard Assessment (OEHHA). CalEnviroScreen 4.0. Available <a href="#">here</a> .	Unemployment percentile
housingB	California Office of Environmental Health Hazard Assessment (OEHHA). CalEnviroScreen 4.0. Available <a href="#">here</a> .	Percent housing burdened low income households
housingBP	California Office of Environmental Health Hazard Assessment (OEHHA). CalEnviroScreen 4.0. Available <a href="#">here</a> .	Housing burden percentile
PopChar	California Office of Environmental Health Hazard Assessment (OEHHA). CalEnviroScreen 4.0. Available <a href="#">here</a> .	Average of percentiles from the Population Characteristics indicators
PopCharScore	California Office of Environmental Health Hazard Assessment (OEHHA). CalEnviroScreen 4.0. Available <a href="#">here</a> .	Population Characteristics variable scaled with a range of 0-10. (Used to calculate CES 4.0 Score)
PopCharP	California Office of Environmental Health Hazard Assessment (OEHHA). CalEnviroScreen 4.0. Available <a href="#">here</a> .	Population characteristics percentile
Children_under10	California Office of Environmental Health Hazard Assessment (OEHHA). CalEnviroScreen 4.0. Available <a href="#">here</a> .	2019 ACS population estimates per census tract of children under 10 years old

<b>Metric</b>	<b>Source</b>	<b>Definition</b>
Children_under10.pct	California Office of Environmental Health Hazard Assessment (OEHHA). CalEnviroScreen 4.0. Available <a href="#">here</a> .	2019 ACS population estimates of the percent per census tract of children under 10 years old
Pop.10_64.years	California Office of Environmental Health Hazard Assessment (OEHHA). CalEnviroScreen 4.0. Available <a href="#">here</a> .	2019 ACS population estimates per census tract of people between 10 and 64 years old
Pop.10_64.years.pct	California Office of Environmental Health Hazard Assessment (OEHHA). CalEnviroScreen 4.0. Available <a href="#">here</a> .	2019 ACS population estimates of the percent per census tract of people between 10 and 64 years old
Elderly_65over	California Office of Environmental Health Hazard Assessment (OEHHA). CalEnviroScreen 4.0. Available <a href="#">here</a> .	2019 ACS population estimates per census tract of elderly 65 years and older
Elderly_65over.pct	California Office of Environmental Health Hazard Assessment (OEHHA). CalEnviroScreen 4.0. Available <a href="#">here</a> .	2019 ACS population estimates of the percent per census tract of elderly 65 years and older
Hispanic	California Office of Environmental Health Hazard Assessment (OEHHA). CalEnviroScreen 4.0. Available <a href="#">here</a> .	2019 ACS population estimates per census tract of those who identify as Hispanic or Latino
Hispanic.pct	California Office of Environmental Health Hazard Assessment (OEHHA). CalEnviroScreen 4.0. Available <a href="#">here</a> .	2019 ACS population estimates of the percent per census tract of those who identify as Hispanic or Latino
White	California Office of Environmental Health Hazard Assessment (OEHHA). CalEnviroScreen 4.0. Available <a href="#">here</a> .	2019 ACS population estimates per census tract of those who identify as non-Hispanic white
White.pct	California Office of Environmental Health Hazard Assessment (OEHHA). CalEnviroScreen 4.0. Available <a href="#">here</a> .	2019 ACS population estimates of the percent per census tract of those who identify as non-Hispanic white
African.American	California Office of Environmental Health Hazard Assessment (OEHHA). CalEnviroScreen 4.0. Available <a href="#">here</a> .	2019 ACS population estimates per census tract of those who identify as non-Hispanic African American or black
African.American.pct	California Office of Environmental Health Hazard Assessment (OEHHA). CalEnviroScreen 4.0. Available <a href="#">here</a> .	2019 ACS population estimates of the percent per census tract of those who identify as non-Hispanic African American or black

<b>Metric</b>	<b>Source</b>	<b>Definition</b>
Native.American	California Office of Environmental Health Hazard Assessment (OEHHA). CalEnviroScreen 4.0. Available <a href="#">here</a> .	2019 ACS population estimates per census tract of those who identify as non-Hispanic Native American
Native.American.pct	California Office of Environmental Health Hazard Assessment (OEHHA). CalEnviroScreen 4.0. Available <a href="#">here</a> .	2019 ACS population estimates of the percent per census tract of those who identify as non-Hispanic Native American
Asian.American	California Office of Environmental Health Hazard Assessment (OEHHA). CalEnviroScreen 4.0. Available <a href="#">here</a> .	2019 ACS population estimates per census tract of those who identify as non-Hispanic Asian or Pacific Islander
Asian.American.pct	California Office of Environmental Health Hazard Assessment (OEHHA). CalEnviroScreen 4.0. Available <a href="#">here</a> .	2019 ACS population estimates of the percent per census tract of those who identify as non-Hispanic Asian or Pacific Islander
Other.Multiple	California Office of Environmental Health Hazard Assessment (OEHHA). CalEnviroScreen 4.0. Available <a href="#">here</a> .	2019 ACS population estimates per census tract of those who identify as non-Hispanic "other" or as multiple races
Other.Multiple.pct	California Office of Environmental Health Hazard Assessment (OEHHA). CalEnviroScreen 4.0. Available <a href="#">here</a> .	2019 ACS population estimates of the percent per census tract of those who identify as non-Hispanic "other" or as multiple races