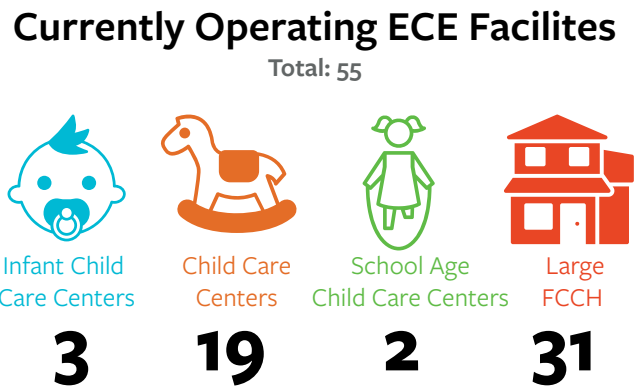
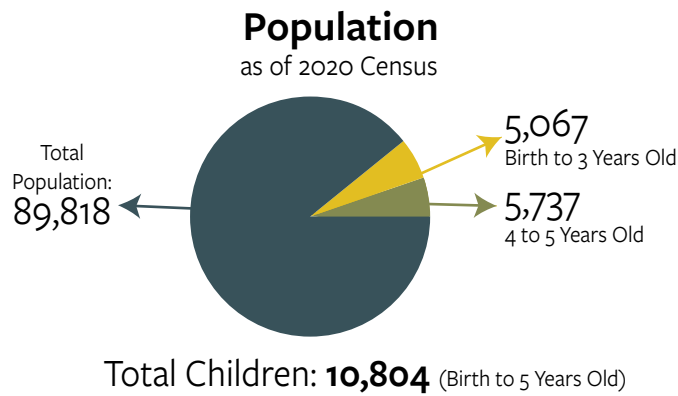


## Establishing a Child Care Facility - Guide to Zoning and Permitting

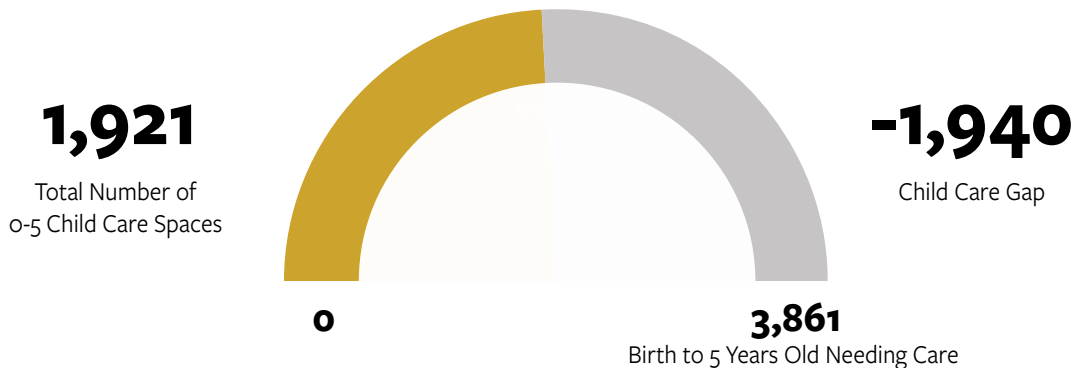
In 2021, Riverside County ranked 56 out of 58 for the availability of child care. This severely limits working families access to quality, safe, and healthy licensed child care spaces. The fact sheet below (with data self-reported through a survey conducted in 2023) provides a snapshot of current child care zoning, permitting and fees in each jurisdiction with the goal of helping guide changes to support and improve access to child care.

### Riverside County Population Census 2020: 2,418,177

#### City of Hemet by the Numbers:

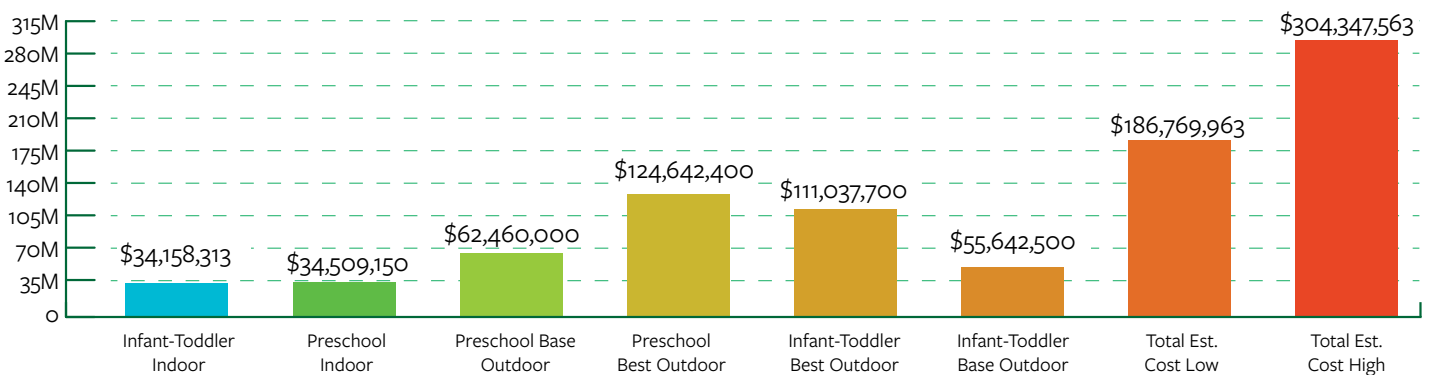


#### Child Care Gap



#### Estimated ECE Facility Cost 2021

(Average new construction sq. ft. per child is about 110 sq. ft.)



## Zones where Child Care Centers are Allowed and are Not Allowed

Zones	Residential	Commercial	Industrial	Mixed-Use	Other/Notes
Allowed By-Right (with an Administrative Permit)	✓	—	—	—	—
Prohibited	—	—	✓	—	—
Zones where child care is allowed with a Conditional (Discretionary) Use Permit	—	✓	—	—	Commercial-Manufacturing Zone

## About the Permit Application Process

Approximate Timeline	6 weeks to 3 months
Noise Requirements	Unanswered
Landscaping Requirements	Unanswered
Parking Requirements	Unanswered
Traffic Requirements	Unanswered
Setback Requirements	Unanswered
Other	Decision to approve or deny is based on findings
Requirements to Obtain a Child Care Center Clearance From the Fire Department	<ul style="list-style-type: none"> <li>• The applicant must pay for a Fire Department inspection for which there is a fee</li> <li>• For family child care home you must obtain a permit and pass Fire Department inspection</li> </ul>

## About the Permit Hearing Process

Permit Hearing Caused By	Conditional Use Permit (CUP) Process, and AUP (Administrative Use Permit)
Hearing Conducted By	CUP - Planning Commission, AUP - Director
Notification of Hearing	Residents and property owners within 500 feet of site
Approves or Denies the Permit	CUP - Planning Commission, AUP - Community Development Director
Appeal Process	<p><b>Step 1:</b> Appeal filed within 10 days of decision - with fee and reason</p> <p><b>Step 2:</b> Director will schedule appeal with City Council within 30 days</p> <p><b>Step 3:</b> City Council's decision is final</p>

### Child Care Centers Costs and Fees\*

Permit Hearing Costs:	\$1,594
Business License Fee:	\$40
Planning Permit Fees:	Fee 1 - \$7,987 for a CUP in C-2 and C-M zone
	Fee 2 - \$5,327 for an AUP in OP and C-1 zone

\*Estimate as of September 2023. Additional fees may apply, for more information review Helpful Contacts.

## Zones Where Family Child Care Homes are Allowed and are Not Allowed

Zones	Residential	Commercial	Industrial	Mixed-Use	Other/Notes
Allowed By-Right	✓	—	—	✓	—
Prohibited	—	✓	✓	—	—

State law SB 234 requirements which exempt small and large family child care home from any licenses, permits, home occupation permits, or fees ([Child Care Law Center’s Fact Sheet. Frequently Asked Questions: SB 234: The Keeping Kids Close to Home Act — Child Care Law Center](#)).

### Find out where your city is with SB 234 implementation

	Non-Compliant	Compliant
FCCH Allowed in Residential	—	✓
FCCH Business License Fee Not Required	✓	—
Fire Department Permit Clearance and Fees for FCCH Not Required	✓	—

**Costs and Fees\***  
FCCH Business License Fee: \$44

### General Plan

Next Update to the General Plan	More than 6 years
Child Care Included In General Plan	Not Sure

### Additional Information

Business license fees apply to centers with 5 or more. Only State licensed centers are issued business licenses

AUP - <https://tinyurl.com/29xfu3c>

CUP - <https://tinyurl.com/7ujbffd>

Hemet business license was contacted regarding the fees being charged for large residential care facilities and will be making changes to the zoning code

### Quick & Helpful Contacts\*

	Planning Dept	Building Dept	Community Development	Build Up Riverside County
Name	Soledad Carrisoza	Pete Goodrich	Salvador Lopez	Andrea Del Valle
Email	<a href="mailto:scarrisoza@hemetca.gov">scarrisoza@hemetca.gov</a>	<a href="mailto:Pgoodrich@hemetca.gov">Pgoodrich@hemetca.gov</a> <a href="mailto:Bldgstaff@hemetca.gov">Bldgstaff@hemetca.gov</a>	<a href="mailto:Slopez@hemetca.gov">Slopez@hemetca.gov</a>	<a href="mailto:adelvalle@liifund.org">adelvalle@liifund.org</a>
Phone	(951) 765-3881	(951) 765-2480	(951) 765-2375	(951) 870-8112
Website	<a href="http://hemetca.gov/96/Planning">hemetca.gov/96/Planning</a>	<a href="http://hemetca.gov/68/Building-Safety">hemetca.gov/68/Building-Safety</a>	<a href="http://hemetca.gov/352/Community-Development">hemetca.gov/352/Community-Development</a>	<a href="http://buildupca.org/riverside">buildupca.org/riverside</a>

\*We thank each jurisdiction for completing the survey. If you have any questions about this profile, please contact them directly. View the website for updated contact information.