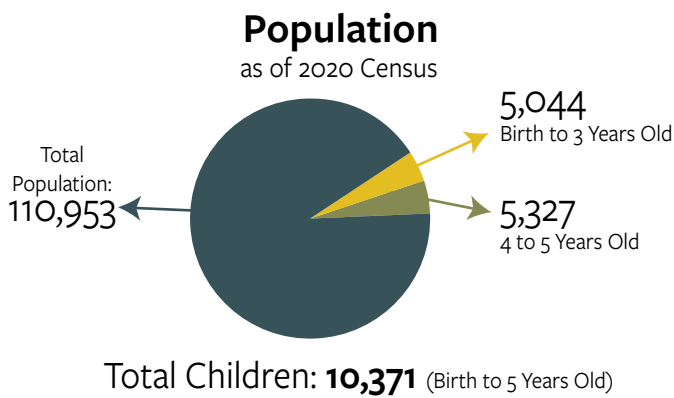


Establishing a Child Care Facility - Guide to Zoning and Permitting

In 2021, Riverside County ranked 56 out of 58 for the availability of child care. This severely limits working families access to quality, safe, and healthy licensed child care spaces. The fact sheet below (with data self-reported through a survey conducted in 2023) provides a snapshot of current child care zoning, permitting and fees in each jurisdiction with the goal of helping guide changes to support and improve access to child care.

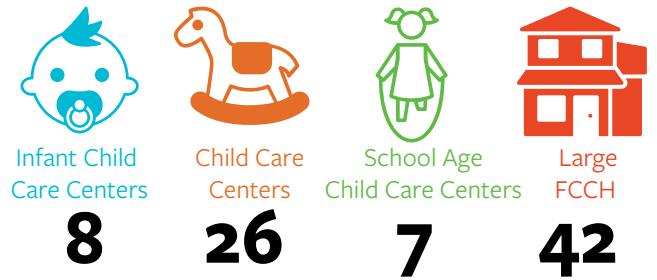
Riverside County Population Census 2020: 2,418,177

City of Murrieta by the Numbers:

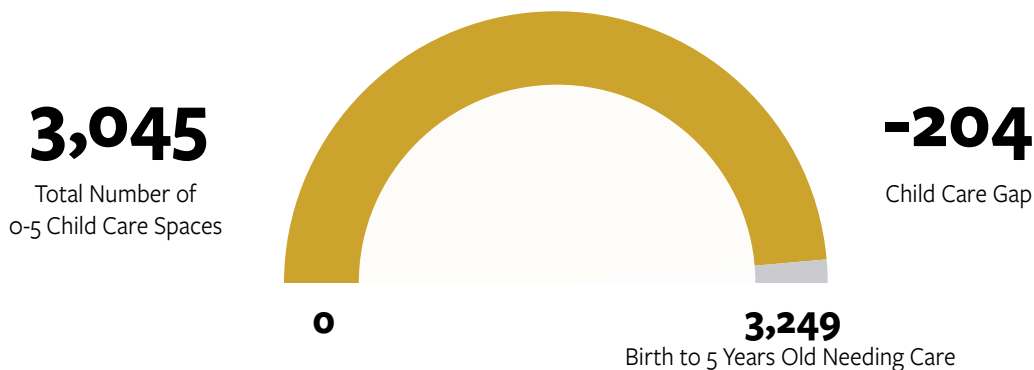


Currently Operating ECE Facilities

Total: 83

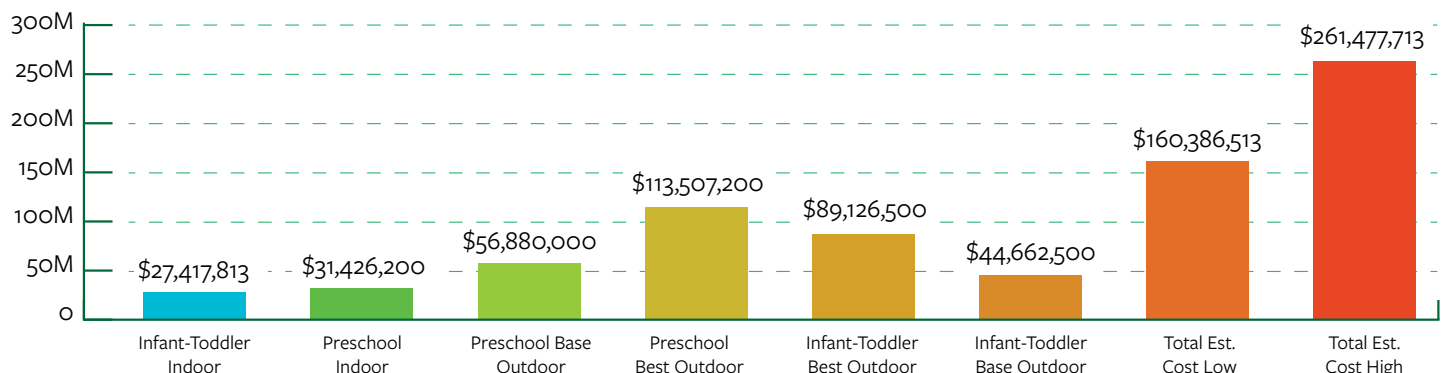


Child Care Gap



Estimated ECE Facility Cost 2021

(Average new construction sq. ft. per child is about 110 sq. ft.)



Zones where Child Care Centers are Allowed and are Not Allowed

Zones	Residential	Commercial	Industrial	Mixed-Use	Other/Notes
Allowed By-Right (with an Administrative Permit)	✓	—	—	—	—
Prohibited	—	—	✓	—	—
Zones where child care is allowed with a Conditional (Discretionary) Use Permit	—	✓	—	—	—

About the Permit Application Process

Approximate Timeline	3 - 6 months
Noise Requirements	Need to ensure facility (outdoor area) is consistent with Noise Ordinance
Landscaping Requirements	Landscape plan is required for MCUP child care facilities
Parking Requirements	Parking minimum requirements for MCUP child care facilities
Traffic Requirements	Review for traffic with MCUP for child care facilities
Setback Requirements	Setbacks required for traffic with MCUP for child care facilities
Requirements to Obtain a Child Care Center Clearance From the Fire Department	<ul style="list-style-type: none"> • Fire clearance required - initial review is covered by the planning fees. Inspections that are for 'prior to occupancy' are at fee review rate • Family child care home need a permit for review and for inspection

About the Permit Hearing Process

Permit Hearing Caused By	Only if the MCUP (Director's Decision) is appealed to the Planning Commission
Hearing Conducted By	Director reviews and approves the Minor Conditional Use Permit
Notification of Hearing	The MCUP is advertised as a Director's Approval Process with newspaper ad, sign posting at property and 300 feet noticing package to the neighbors
Approves or Denies the Permit	Planning
Appeal Process	<p>Step 1: Appeal must be filed within 10 day's of decision</p> <p>Step 2: Meet and Confer meeting is held with applicant/appellant</p> <p>Step 3: Staff schedules Planning Commission hearing with staff report and presents powerpoint</p> <p>Step 4: Depending upon outcome, the Planning Commission decision can be appealed to City Council</p>

Child Care Centers Costs and Fees*

Permit Hearing Costs	\$1,000
Business License Fee	\$75
Planning Permit Fees:	Fee 1 - MCUP review fee: \$4,214
	Fee 2 - Large Family Daycare processing fee: \$919

*Estimate as of September 2023. Additional fees may apply, for more information review Helpful Contacts.

Zones Where Family Child Care Homes are Allowed and are Not Allowed

Zones	Residential	Commercial	Industrial	Mixed-Use	Other/Notes
Allowed By-Right	✓	—	—	—	—
Prohibited	—	✓	✓	✓	—

State law SB 234 requirements which exempt small and large family child care home from any licenses, permits, home occupation permits, or fees ([Child Care Law Center’s Fact Sheet. Frequently Asked Questions: SB 234: The Keeping Kids Close to Home Act — Child Care Law Center](#)).

Find out where your city is with SB 234 implementation

	Non-Compliant	Compliant
FCCH Allowed in Residential	—	✓
FCCH Business License Fee Not Required	✓	—
Fire Department Permit Clearance and Fees for FCCH Not Required	✓	—

Costs and Fees*
FCCH Business License Fee: \$75

General Plan

Next Update to the General Plan	1 – 2 years
Child Care Included In General Plan	Not Sure

Additional Information

City states: We do our best to expedite child care centers

Quick & Helpful Contacts*

	City Planner	Building Dept	Development Services	Build Up Riverside County
Name	Carl Stiehl	Andy Krogh	David Chantarangsu	Andrea Del Valle
Email	cstiehl@murrietaca.gov	Akrogh@murrietaca.gov	Dchantarangsu@murrietaca.gov	adelvalle@liifund.org
Phone	(951) 461-6063	(951) 461-6062	(951) 461-6002	(951) 870-8112
Website	https://tinyurl.com/yxnc5bk4	https://tinyurl.com/23k8fjsb	https://tinyurl.com/ycrj2tk8	https://tinyurl.com/mwe7jj29

*We thank each jurisdiction for completing the survey. If you have any questions about this profile, please contact them directly. View the website for updated contact information.