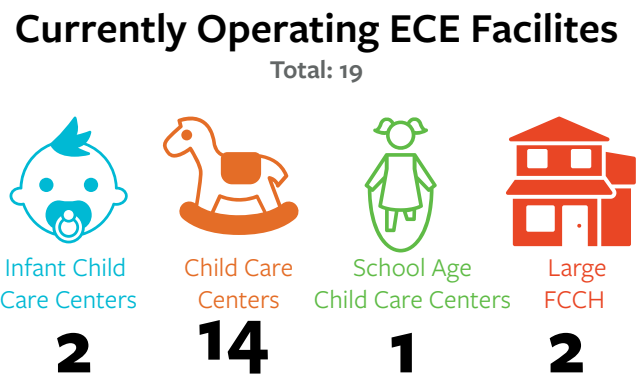
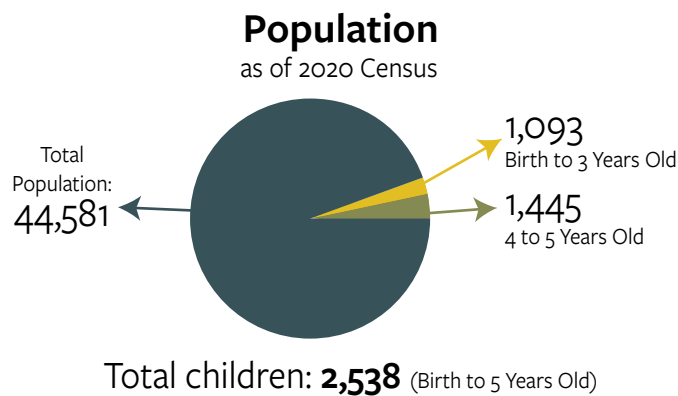


Establishing a Child Care Facility - Guide to Zoning and Permitting

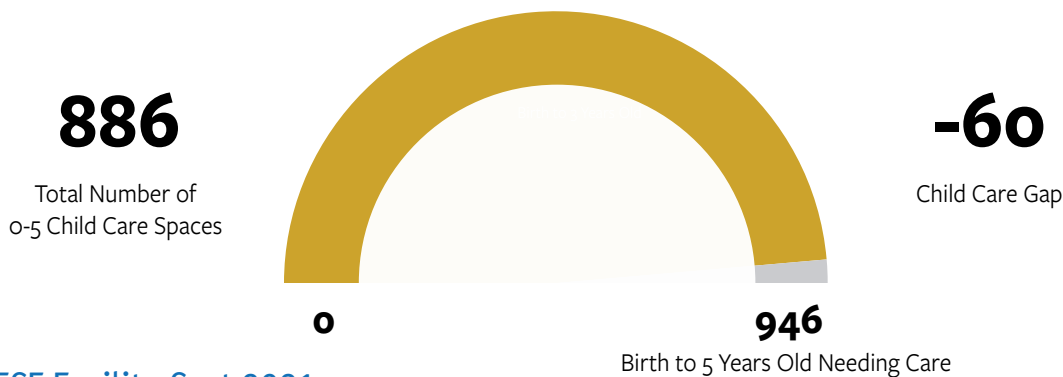
In 2021, Riverside County ranked 56 out of 58 for the availability of child care. This severely limits working families access to quality, safe, and healthy licensed child care spaces. The fact sheet below (with data self-reported through a survey conducted in 2023) provides a snapshot of current child care zoning, permitting and fees in each jurisdiction with the goal of helping guide changes to support and improve access to child care.

Riverside County Population Census 2020: 2,418,177

City of Palm Springs by the Numbers:

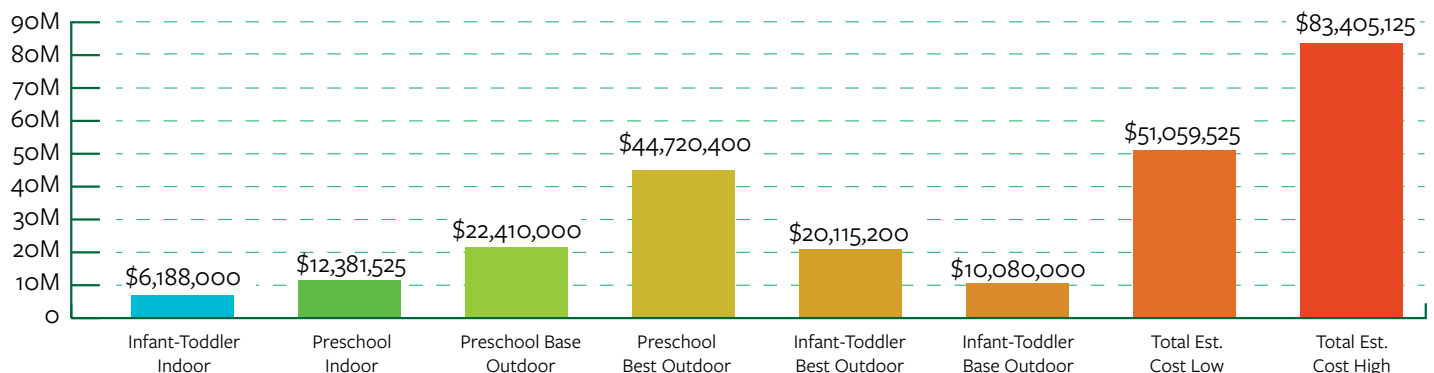


Child Care Gap



Estimated ECE Facility Cost 2021

(Average new construction sq. ft. per child is about 110 sq. ft.)



Zones where Child Care Centers are Allowed and Not Allowed

Zone	Residential	Commercial	Industrial	Mixed-Use	Other/Notes
Allowed By-Right (with an Administrative Permit)	✓	—	—	—	—
Prohibited	—	—	✓	—	—
Zones where child care is allowed with a Conditional (Discretionary) Use Permit	—	✓	—	✓	—

About the Permit Application Process

Approximate Timeline	6 weeks to 3 months
Noise Requirements	Compliance with citywide noise ordinance
Landscaping Requirements	Dependent on required approvals
Parking Requirements	Dependent on zone and location
Traffic Requirements	Dependent on zone and location
Setback Requirements	Dependent on zone and location
Requirements to Obtain a Child Care Center Clearance From the Fire Department	Compliance with fire code

About the Permit Hearing Process

Permit Hearing Caused By	Conditional Use Permit (CUP) Process
Hearing Conducted By	Planning Commission
Notified of Hearing	Residents/businesses within 500 feet
Approves or denies the permit	Planning Department for LUP, Planning Commission for CUP
Appeal Process	CUP appeal to City Council

Child Care Centers Costs and Fees*

Permit Hearing Costs:	\$1756 + \$852 noticing
Business License Fee:	Dependent on size min. \$67
Planning Permit Fees:	Fee 1 - Land Use Permit - \$453
	Fee 2 - Conditional Use Permit - \$5,256
	Fee 3 - Notification Charge (for CUP) - \$852

*Estimate as of September 2023. Additional fees may apply, for more information review Helpful Contacts.

Zones Where Family Child Care Homes are Allowed and are Not Allowed

Zones	Residential	Commercial	Industrial	Mixed-Use	Other/Notes
Allowed By-Right	✓	✓	✓	✓	—
Prohibited	—	—	—	—	—

State law SB 234 requirements which exempt small and large family child care home from any licenses, permits, home occupation permits, or fees ([Child Care Law Center’s Fact Sheet. Frequently Asked Questions: SB 234: The Keeping Kids Close to Home Act — Child Care Law Center](#)).

Find out where your city is with SB 234 implementation

	Non-Compliant	Compliant
FCCH Allowed in Residential	—	✓
FCCH Business License Fee Not Required	✓	—
Fire Department Permit Clearance and Fees for FCCH Not Required	Not Sure	—

Costs and Fees*
FCCH Business License Fee:
Depends on Size

General Plan

Next Update to the General Plan	5-6 years
Child Care Included In General Plan	Yes

Additional Information

General plan - <https://tinyurl.com/29wv4bzb>

Quick & Helpful Contacts*

	Planning Dept	Building Dept	Community Development	Build Up Riverside County
Name	Christopher Hadwin	Dana MacAllister	Jay Virata	Andrea Del Valle
Email	Christopher.hadwin@palmspringsca.gov	Dana.macallister@palmspringsca.gov	Jay.virata@palmspringsca.gov	adelvalle@liifund.org
Phone	(760) 323-8245 - ext. 8330	(760) 323-8221 - ext. 8221	(760) 323-8228	(323) 986.6465 - Ext 465
Website	https://www.palmspringsca.gov/government/departments/planning	https://www.palmspringsca.gov/government/departments/building	https://www.palmspringsca.gov/government/departments/community-economic-development-department	https://buildupca.org/riverside/

*We thank each jurisdiction for completing the survey. If you have any questions about this profile, please contact them directly. View the website for updated contact information.