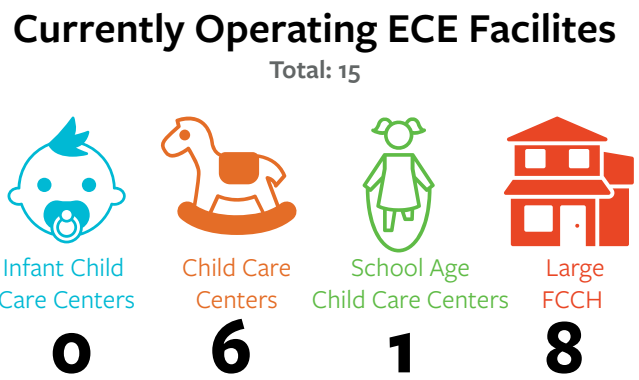
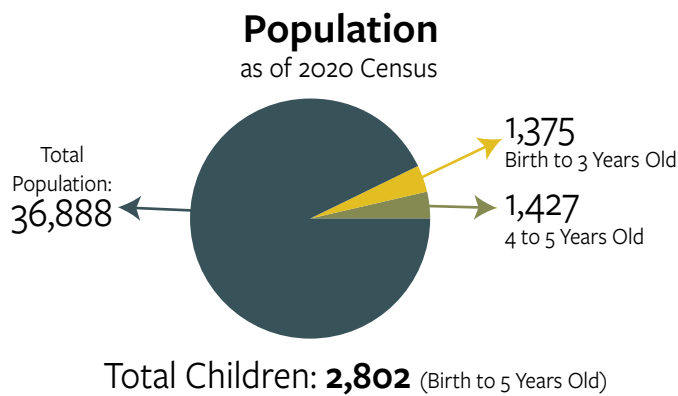


Establishing a Child Care Facility - Guide to Zoning and Permitting

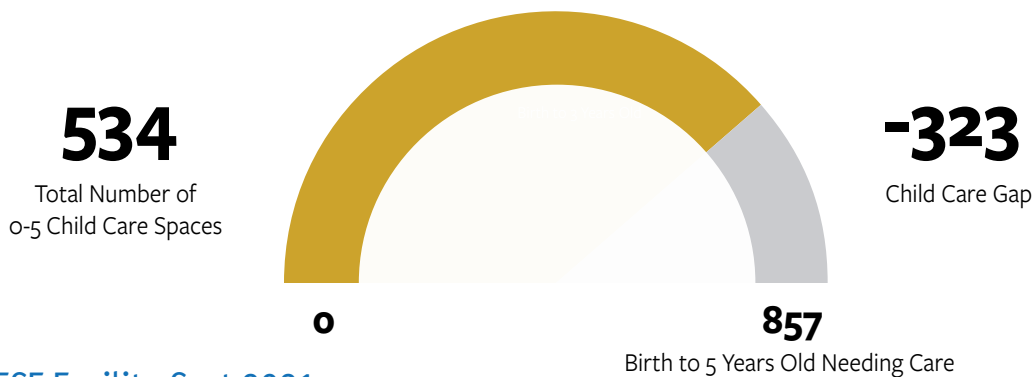
In 2021, Riverside County ranked 56 out of 58 for the availability of child care. This severely limits working families access to quality, safe, and healthy licensed child care spaces. The fact sheet below (with data self-reported through a survey conducted in 2023) provides a snapshot of current child care zoning, permitting and fees in each jurisdiction with the goal of helping guide changes to support and improve access to child care.

Riverside County Population Census 2020: 2,418,177

City of Wildomar by the Numbers:

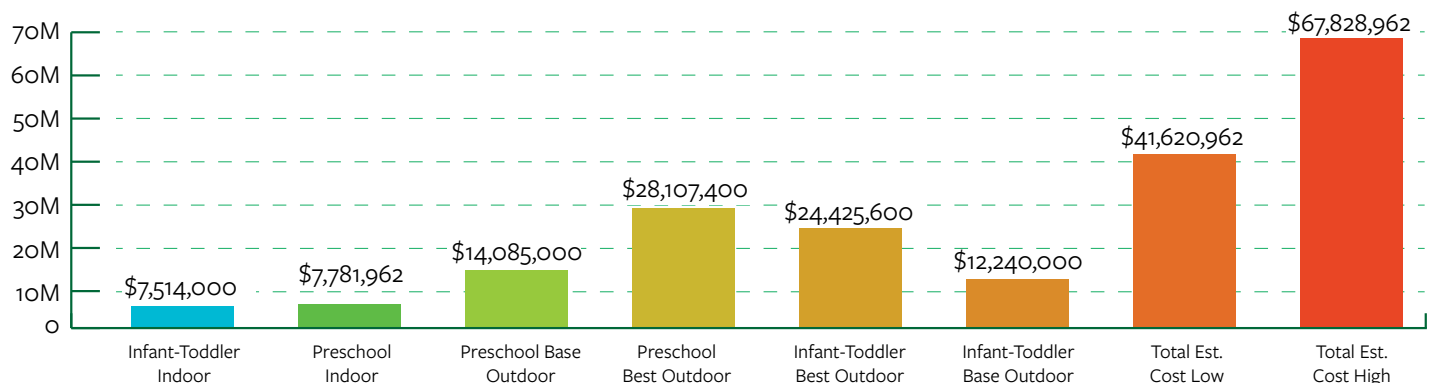


Child Care Gap



Estimated ECE Facility Cost 2021

(Average new construction sq. ft. per child is about 110 sq. ft.)



Zones where Child Care Centers are Allowed and Not Allowed

Zone	Residential	Commercial	Industrial	Mixed-Use	Other/Notes
Allowed By-Right (with an Administrative Permit)	—	✓	—	—	—
Prohibited	✓	—	✓	—	—
Zones Where Child Care is Allowed with a Conditional (Discretionary) Use Permit	—	—	—	—	No CUP is required

About the Permit Application Process

Approximate Timeline	6 weeks to 3 months
Noise Requirements	Per code
Landscaping Requirements	Per code
Parking Requirements	Per code
Traffic Requirements	TIA
Setback Requirements	Per code
Requirements to Obtain a Child Care Center Clearance From the Fire Department	<ul style="list-style-type: none"> • Approval of tenant improvement plans per RCFD conditions • Family child care home - tenant improvement plans and final inspections for Certificate of Occupancy

About the Permit Hearing Process

Permit Hearing Caused By	None
Hearing Conducted By	N/A
Notified of Hearing	N/A
Approves or denies the permit	Community Development Dept
Appeal Process	<p>Step 1: A person files a \$965 fee and appeal application within 10 days of approval</p> <p>Step 2: Appeal set for the next available Planning Commission meeting</p>

Child Care Centers Costs and Fees*

Permit Hearing Costs:	\$965
Business License Fee:	\$79 annually
Planning Permit Fees:	No Required Fee

*Estimate as of September 2023. Additional fees may apply, for more information review Helpful Contacts.

Zones Where Family Child Care Homes are Allowed and are Not Allowed

Zones	Residential	Commercial	Industrial	Mixed-Use	Other/Notes
Allowed By-Right	✓	—	—	—	—
Prohibited	—	✓	✓	✓	—

State law SB 234 requirements which exempt small and large family child care home from any licenses, permits, home occupation permits, or fees ([Child Care Law Center’s Fact Sheet. Frequently Asked Questions: SB 234: The Keeping Kids Close to Home Act — Child Care Law Center](#)).

Find out where your city is with SB 234 implementation

	Non-Compliant	Compliant
FCCH Allowed in Residential	—	✓
FCCH Business License Fee Not Required	✓	—
Fire Department Permit Clearance and Fees for FCCH Not Required	✓	—

Costs and Fees*
FCCH Business License Fee: \$79

General Plan

Next Update to the General Plan	6-12 months
Child Care Included In General Plan	Yes

Additional Information

Planning Application - <https://www.cityofwildomar.org/211/Planning-Applications> General Plan update under preparation. No final product available

Quick & Helpful Contacts*

	Associate Planner, Wildomar	Building Dept	Community Development	Build Up Riverside County
Name	Abdu Lachgar, AICP	M. Scott Burns	Matthew C. Bassi	Andrea Del Valle
Email	alachgar@cityofwildomar.org	Sburns@cityofwildomar.org	mbassi@cityofwildomar.org	adelvalle@liifund.org
Phone	(951) 677-7751 - Ext. 203	(951) 677-7751 - ext. 249	(951) 677-7751 - ext. 213	(323) 986-6465 - Ext 465
Website	https://www.cityofwildomar.org/204/Planning-Department	https://www.cityofwildomar.org/158/Building-Safety-Department	https://www.cityofwildomar.org/204/Planning-Department	https://buildupca.org/riverside/

*We thank each jurisdiction for completing the survey. If you have any questions about this profile, please contact them directly. View the website for updated contact information.