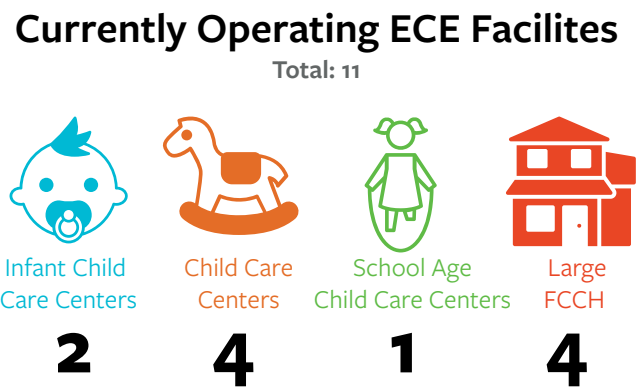
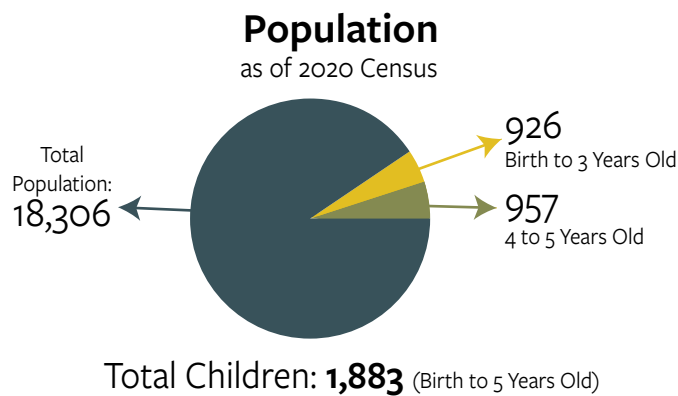


## Establishing a Child Care Facility - Guide to Zoning and Permitting

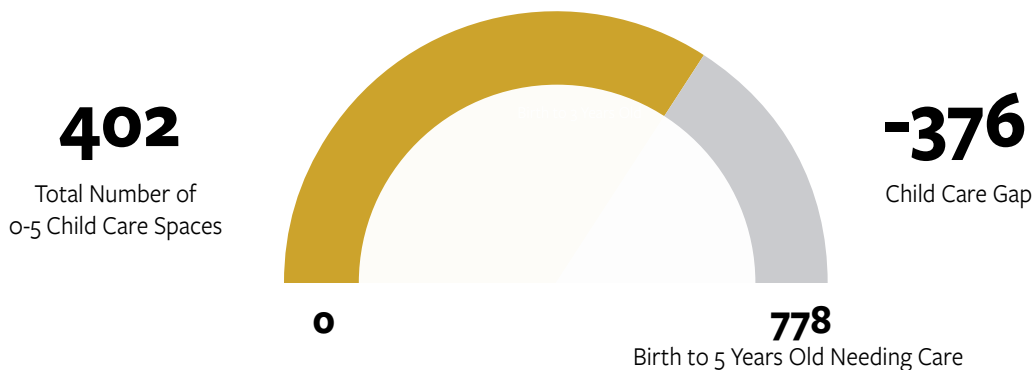
In 2021, Riverside County ranked 56 out of 58 for the availability of child care. This severely limits working families access to quality, safe, and healthy licensed child care spaces. The fact sheet below (with data self-reported through a survey conducted in 2023) provides a snapshot of current child care zoning, permitting and fees in each jurisdiction with the goal of helping guide changes to support and improve access to child care.

### Riverside County Population Census 2020: 2,418,177

#### City of Blythe by the Numbers:

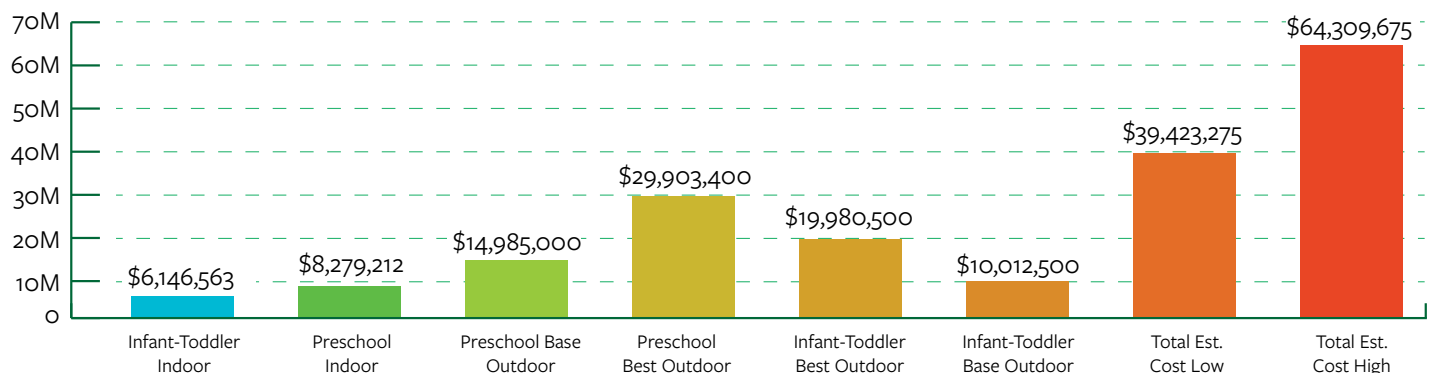


#### Child Care Gap



### Estimated ECE Facility Cost 2021

(Average new construction sq. ft. per child is about 110 sq. ft.)



## Zones where Child Care Centers are Allowed and Not Allowed

Zone	Residential	Commercial	Industrial	Mixed-Use	Other/Notes
Allowed By-Right (with an Administrative Permit)	✓	✓	—	—	—
Prohibited	—	—	✓	—	—
Zones where child care is allowed with a Conditional (Discretionary) Use Permit	✓	—	—	—	—

## About the Permit Application Process

Approximate Timeline	0 - 6 weeks
Noise Requirements	Yes
Landscaping Requirements	No
Parking Requirements	Yes
Traffic Requirements	Yes
Setback Requirements	Yes
Requirements to Obtain a Child Care Center Clearance From the Fire Department	None

## About the Permit Hearing Process

Permit Hearing Caused By	Conditional Use Permit (CUP) Process
Hearing Conducted By	Planning
Hearing Notification	Anyone within 300 feet of the proposed site
Who Approves or Denies the Permit	Planning
Appeal Process	Appeal the decision to City Council

## Child Care Centers Costs and Fees\*

Permit Hearing Costs:	\$555
Business License Fee:	No
Planning Permit Fees:	Large Family Day Care \$357

\*Estimate as of September 2023. Additional fees may apply, for more information review Helpful Contacts.

## Zones Where Family Child Care Homes are Allowed and are Not Allowed

Zones	Residential	Commercial	Industrial	Mixed-Use	Other/Notes
Allowed By-Right	✓	✓	—	—	—
Prohibited	—	—	✓	✓	—

State law SB 234 requirements which exempt small and large family child care home from any licenses, permits, home occupation permits, or fees ([Child Care Law Center’s Fact Sheet. Frequently Asked Questions: SB 234: The Keeping Kids Close to Home Act — Child Care Law Center](#)).

### Find out where your city is with SB 234 implementation

	Non-Compliant	Compliant
FCCH Allowed in Residential	—	✓
FCCH Business License Fee Not Required	—	✓
Fire Department Permit Clearance and Fees for FCCH Not Required	—	✓

**Costs and Fees\***  
FCCH Business License Fee: \$0

### General Plan

Next Update to the General Plan	3-4 years
Child Care Included In General Plan	Not Sure

### Quick & Helpful Contacts\*

	Planning Dept	Building Dept	Permit Technician	Build Up Riverside County
Name	—	Jason Brown	Michelle VanDyke	Andrea Del Valle
Email	—	<a href="mailto:Jbrown@cityofblythe.ca.gov">Jbrown@cityofblythe.ca.gov</a>	<a href="mailto:mvandyke@cityofblythe.ca.gov">mvandyke@cityofblythe.ca.gov</a>	<a href="mailto:adelvalle@liifund.org">adelvalle@liifund.org</a>
Phone	(760) 922-6130 - Ext 1227	(760) 922-6130	(760) 922-6161 - Ext 1227	(951) 870-8112
Website	<a href="http://cityofblythe.ca.gov/27/Planning-Zoning">cityofblythe.ca.gov/27/Planning-Zoning</a>	<a href="http://cityofblythe.ca.gov/29/Building">cityofblythe.ca.gov/29/Building</a>	<a href="http://cityofblythe.ca.gov/29/Building">cityofblythe.ca.gov/29/Building</a>	<a href="http://buildupca.org/riverside">buildupca.org/riverside</a>

\*We thank each jurisdiction for completing the survey. If you have any questions about this profile, please contact them directly. View the website for updated contact information.