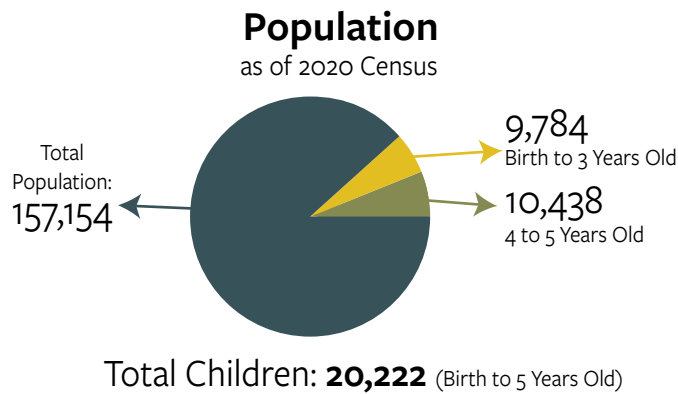


## Establishing a Child Care Facility - Guide to Zoning and Permitting

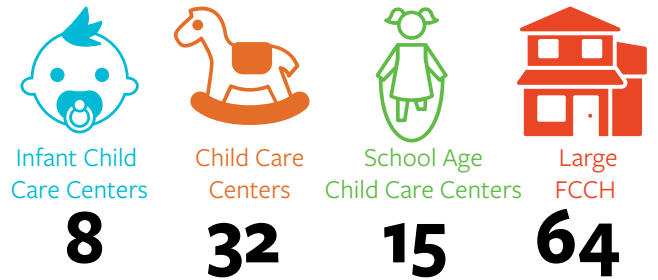
In 2021, Riverside County ranked 56 out of 58 for the availability of child care. This severely limits working families access to quality, safe, and healthy licensed child care spaces. The fact sheet below (with data self-reported through a survey conducted in 2023) provides a snapshot of current child care zoning, permitting and fees in each jurisdiction with the goal of helping guide changes to support and improve access to child care.

### Riverside County Population Census 2020: 2,418,177

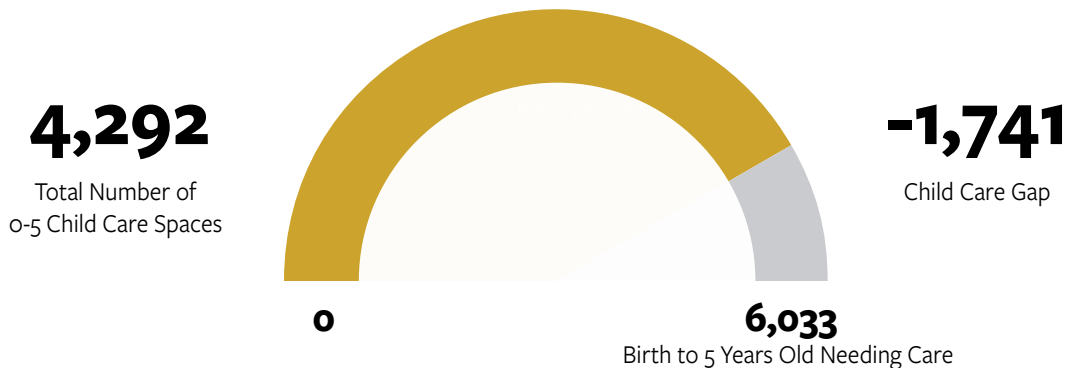
#### City of Corona by the Numbers:



#### Currently Operating ECE Facilities Total: 119

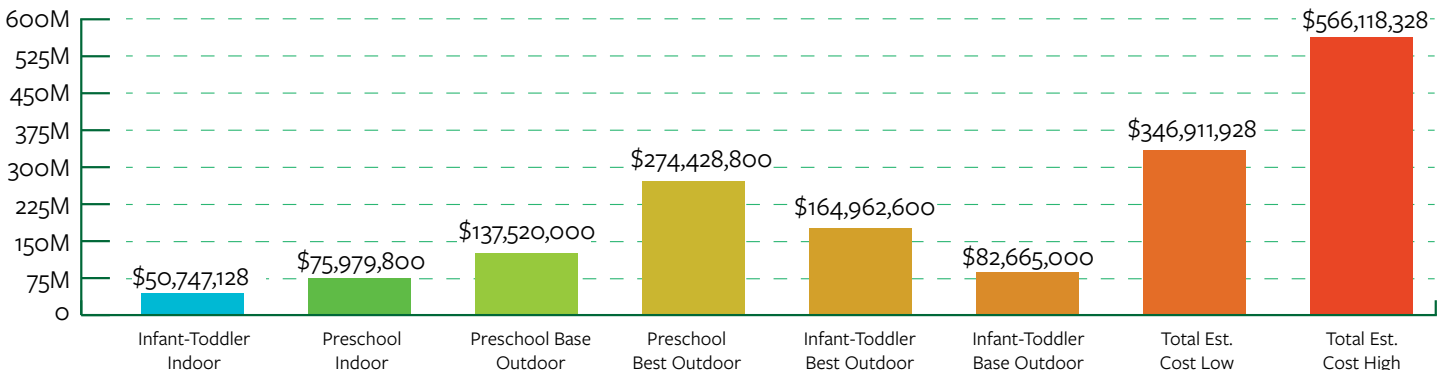


#### Child Care Gap



#### Estimated ECE Facility Cost 2021

(Average new construction sq. ft. per child is about 110 sq. ft.)



## Zones where Child Care Centers are Allowed and Not Allowed

Zone	Residential	Commercial	Industrial	Mixed-Use	Other/Notes
Allowed By-Right (with an Administrative Permit)	✓	—	—	—	small family in residential and Quasi Public Zones
Prohibited	—	—	✓	—	—
Zones where child care is allowed with a Conditional (Discretionary) Use Permit	✓	✓	—	✓	—

## About the Permit Application Process

Approximate Timeline	3 - 6 months
Noise Requirements	Unanswered
Landscaping Requirements	Yes
Parking Requirements	Yes
Traffic Requirements	Unanswered
Setback Requirements	Yes
Other	Unanswered
Requirements to Obtain a Child Care Center Clearance From the Fire Department	For center and family child care home place of assembly permit for fire sprinkler permit

## About the Permit Hearing Process

Permit Hearing Caused By	Conditional Use Permit (CUP) Process
Hearing Conducted By	Planning & Development Department
Hearing Notification	Property owners within a 500 foot radius of the site
Who Approves or Denies the Permit	Planning Commission
Appeal Process	<p><b>Step 1:</b> Must be filed within 10 days from Planning Commission decision</p> <p><b>Step 2:</b> Staff prepares a staff report to City Council</p> <p><b>Step 3:</b> City Council hears appeal at a public hearing</p> <p><b>Step 4:</b> City Council final decision</p>

### Child Care Centers Costs and Fees\*

Permit Hearing Costs:	\$875
Business License Fee:	Cost based on gross income
Planning Permit Fees:	Fee 1 - Conditional Use Permit, \$4,194
	Fee 2 - Public Notice Fee, \$155
	Fee 3 - Legal Publication Fee, \$85
	Fee 4 - Scanning Fee, \$56
	Fee 5 - Environmental Exemption, \$265

\*Estimate as of September 2023. Additional fees may apply, for more information review Helpful Contacts.

### Zones Where Family Child Care Homes are Allowed and are Not Allowed

Zones	Residential	Commercial	Industrial	Mixed-Use	Other/Notes
Allowed By-Right	✓	—	—	—	—
Prohibited	—	✓	—	—	Large family in residential and some commercial zones

State law SB 234 requirements which exempt small and large family child care home from any licenses, permits, home occupation permits, or fees ([Child Care Law Center’s Fact Sheet. Frequently Asked Questions: SB 234: The Keeping Kids Close to Home Act — Child Care Law Center](#)).

#### Find out where your city is with SB 234 implementation

	Non-Compliant	Compliant
FCCH Allowed in Residential	✓ <sup>†</sup>	—
FCCH Business License Fee Not Required	✓	—
Fire Department Permit Clearance and Fees for FCCH Not Required	✓	—

<sup>†</sup>See Other/Notes on “Zones Where Family Child Care Homes are Allowed and are Not Allowed”

**Costs and Fees\***  
FCCH Business license is based on gross income

#### General Plan

Next Update to the General Plan	More than 6 years
Child Care Included In General Plan	No



**Quick & Helpful Contacts\***

	<b>Planning Dept</b>	<b>Building Division</b>	<b>Planning Division</b>	<b>Build Up Riverside County</b>
Name	Joanne Coletta	—	—	Andrea Del Valle
Email	<a href="mailto:joanne.coletta@coronaca.gov">joanne.coletta@coronaca.gov</a>	<a href="mailto:Buildinginspection@coronaca.gov">Buildinginspection@coronaca.gov</a>	<a href="mailto:Commdev@coronaca.gov">Commdev@coronaca.gov</a>	<a href="mailto:adelvalle@liifund.org">adelvalle@liifund.org</a>
Phone	(951) 736-2434	(951) 736-2250	(951) 736-2250	(951) 870-8112
Website	<a href="https://coronaca.gov/government/departments/community-development">coronaca.gov/government/departments/community-development</a>	<a href="https://coronaca.gov/government/departments-divisions/building-division">coronaca.gov/government/departments-divisions/building-division</a>	<a href="https://coronaca.gov/government/departments/community-development">coronaca.gov/government/departments/community-development</a>	<a href="https://buildupca.org/riverside">buildupca.org/riverside</a>

\*We thank each jurisdiction for completing the survey. If you have any questions about this profile, please contact them directly. View the website for updated contact information.